

It is strongly recommended that you follow these step-by-step instructions to set up and quickly begin using your new Digital Camera.

STEP

1

REVIEW THE DOCUMENTATION

Quick Start Guide (this document)
Getting started with your digital camera.

Quick Reference Guide (reverse side of this document)
Quick guide to using common features and functions.

Instruction Manual
Detailed instructions on all camera features and functions.
The supplied items are also listed in this manual.

Software Installation Guide (separate document on OLYMPUS Master CD-ROM)
Detailed instructions on installing the OLYMPUS Master software.

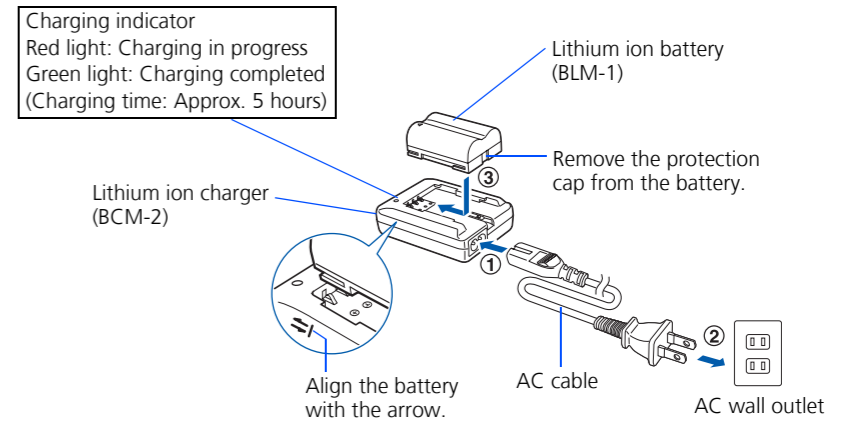
System Chart

STEP

2

CHARGING THE LITHIUM ION BATTERY

Charge the Lithium ion battery using the provided charger. The Lithium ion battery is not fully charged when purchased. Before use, be sure to charge the Lithium ion battery.

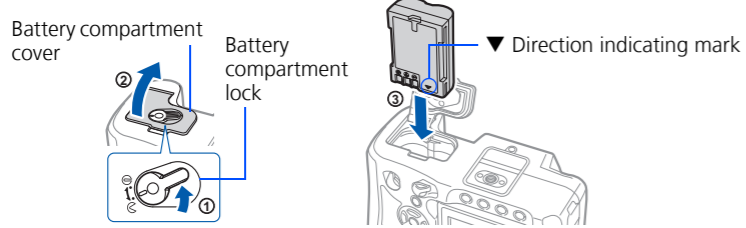


STEP

3

LOADING THE BATTERY

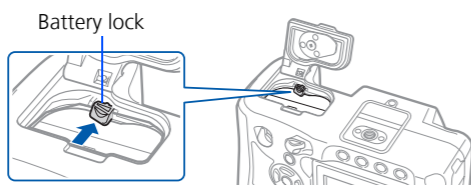
- Slide the battery compartment lock slightly towards ① and open the battery compartment cover towards ②.
- Load and push the battery in until it is locked by the battery lock.



- Close the battery compartment cover and slide the battery compartment lock in the direction of ③.

Unloading the battery

Press the battery lock to unlock the battery. Turn the camera upside-down to remove the battery.



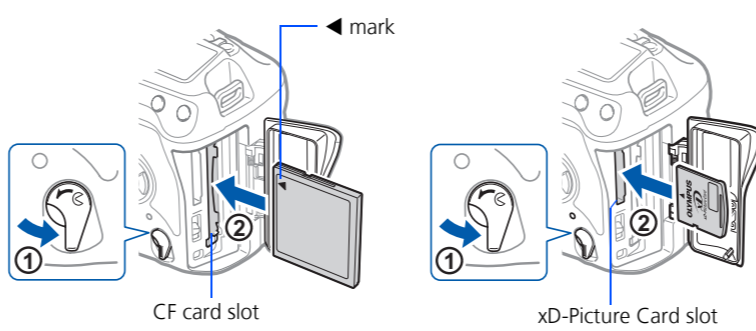
STEP

4

INSERT THE MEMORY CARD

This camera can use a CompactFlash, Microdrive or xD-Picture Card. These cards are optional.

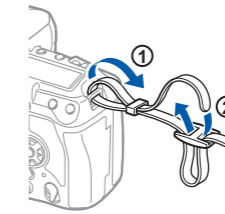
- Slide the card cover lock (①) and open the card cover.
- Insert the card fully as illustrated (②).
- Close the card cover.



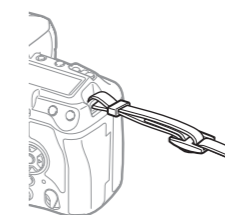
STEP

5

ATTACH THE STRAP



- Thread the strap as indicated by the arrows (①, ②).



- Lastly, pull the strap tight making sure that it is fastened securely (③).

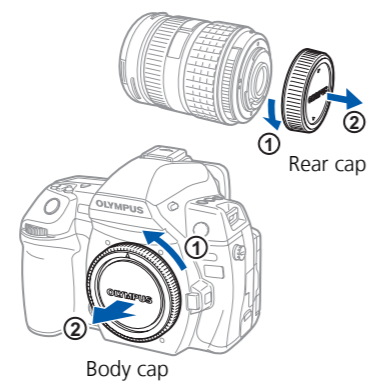
- Attach the other end of the strap to the other eyelet in the same way.

STEP

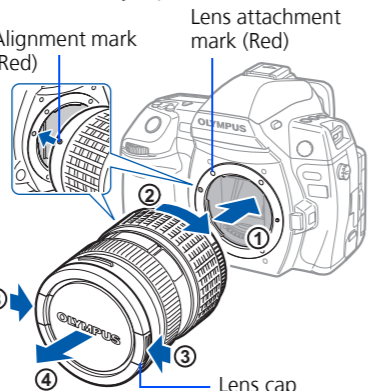
6

ATTACH A LENS

- Remove the body cap from the camera and the rear cap from the lens.



- Align the lens attachment mark (red) on the camera with the alignment mark (red) on the lens, then insert the lens into the camera's body. Rotate the lens clockwise until you hear it click.



- Do not press the lens release button.
- Remove the lens cap.

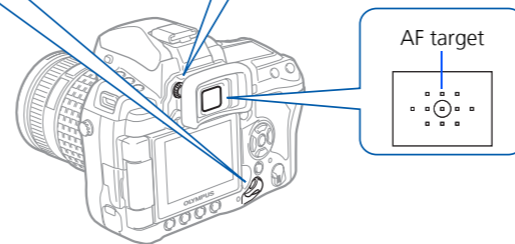
STEP

7

TURN ON THE CAMERA

- Set the power switch to **ON**. To turn off the power, set the power switch to **OFF**.

- While looking through the viewfinder, rotate the diopter adjustment dial slowly. When you can see the AF target clearly, adjustment is complete.

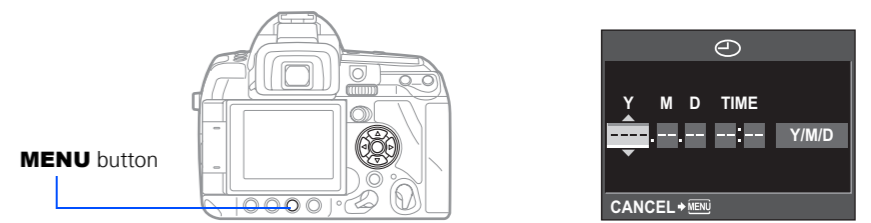


STEP

8

SET THE DATE AND TIME

- With the camera on, press the **MENU** button.
- Use \leftarrow and \rightarrow to select [T2] tab, then press \odot . Use \leftarrow and \rightarrow to select [C], then press \odot .
- Use \leftarrow and \rightarrow to set the year, then press \odot .
- Use \leftarrow and \rightarrow to set each item and press \odot to move to the next item.
- Use \leftarrow and \rightarrow to select the date format.
- Press the \odot button when you have finished entering the date and time.

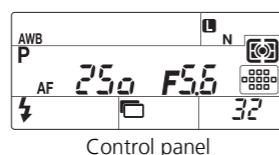
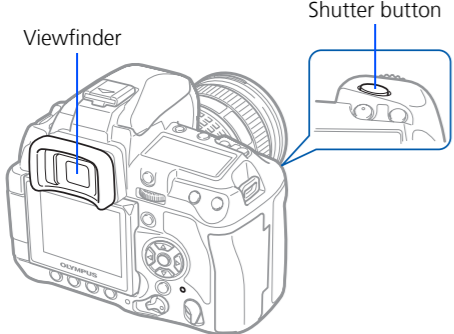
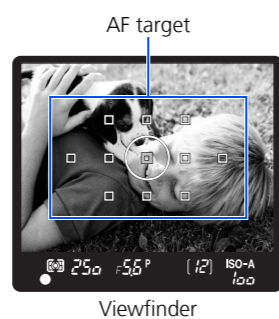


STEP

9

TAKING A PICTURE

- Place the AF target on the subject while viewing through the viewfinder.
- Press and hold the shutter button halfway to lock the focus and exposure, then press the shutter button completely to take the picture.

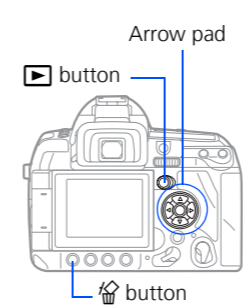


STEP

10

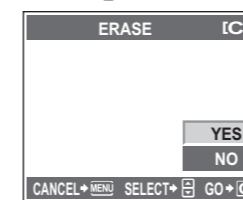
REVIEWING AND ERASING A PICTURE

- Press the \square button. The last picture taken is displayed.
- Use the arrow pad to select images you want to view.
- To return to the shooting mode, press the shutter button halfway.



ERASING A PICTURE

- Select the picture you want to erase and press the \square button.
- Use \leftarrow and \rightarrow to select [YES], then press the \odot button.

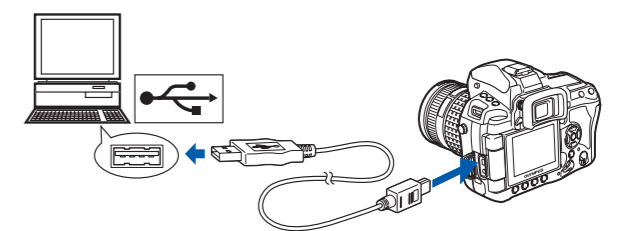


STEP

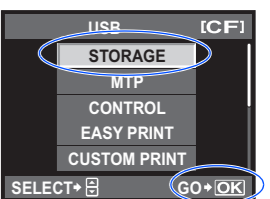
11

CONNECTING THE CAMERA TO A COMPUTER

- Make sure the camera is off.
- Connect the camera to the computer using the USB cable (included). Set the camera's power switch to **ON**.



- Use \leftarrow and \rightarrow to select [STORAGE]. Press the \odot button.



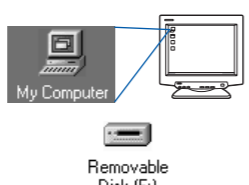
STEP

12

VERIFY CAMERA CONNECTION

WINDOWS:

- From the desktop ("Start" menu for XP), open "My Computer".
- Verify that the "Removable Disk" icon representing the camera is displayed.



MACINTOSH:

- Verify that the "NO_NAME" icon representing the camera is displayed.



The above steps confirm that the camera has been installed correctly. You can transfer your images immediately using the standard drag and drop procedure, or enhance your experience using OLYMPUS Master software (included).

STEP

13

ABOUT THE CD-ROM DISK



Now that you've mastered the basic functionality of your new Olympus Digital Camera, you are ready to begin exploring the possibilities that digital photography brings to your computer. Activities such as photo editing, printing and much more are only steps away!

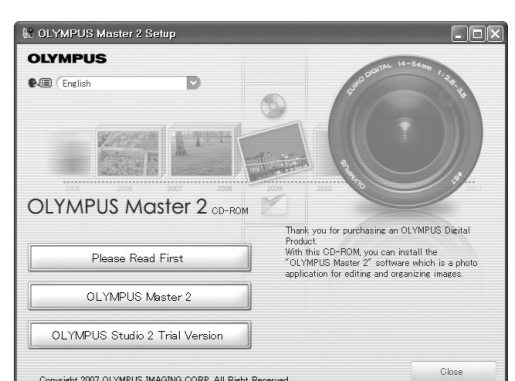
OLYMPUS Master software: Download pictures from the camera, view, organize, retouch, e-mail and print your digital photos and movies and more!

STEP

14

INSTALLING THE CAMERA SOFTWARE

- Insert the OLYMPUS Master CD-ROM into your computer's CD-ROM drive.
- For Windows: Select the display language and click the "OLYMPUS Master 2" button in the "OLYMPUS Master 2 Setup" window.
For Macintosh: Double-click the "Setup" icon.
- Follow the on-screen instructions. For more details, click "Please Read First".



Please refer to the Quick Reference Guide on the reverse side of this sheet to familiarize yourself with the commonly used features and functions of your new Olympus Digital Camera.

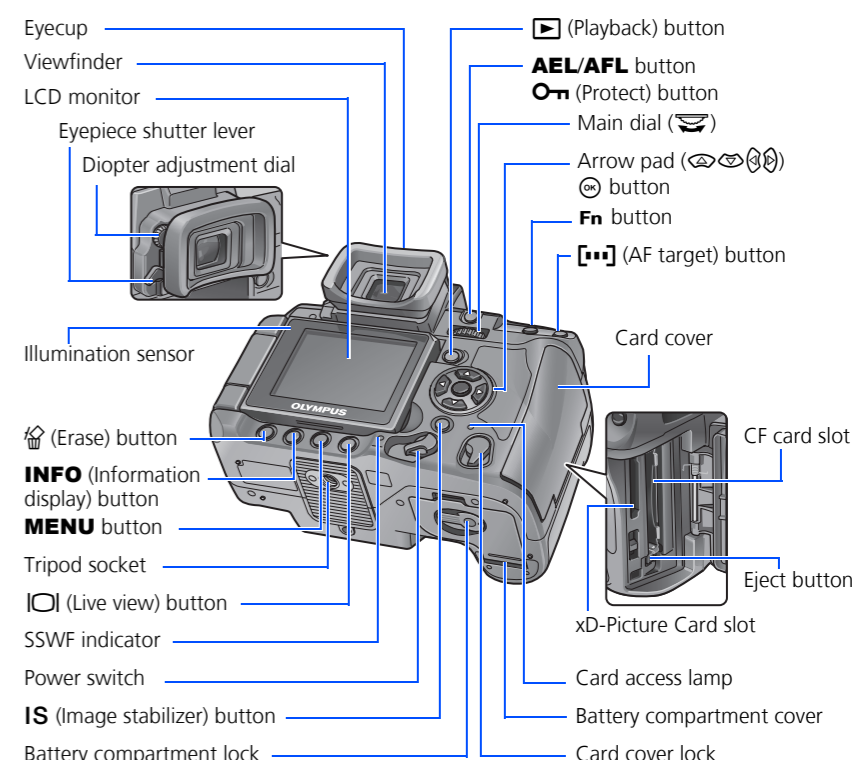
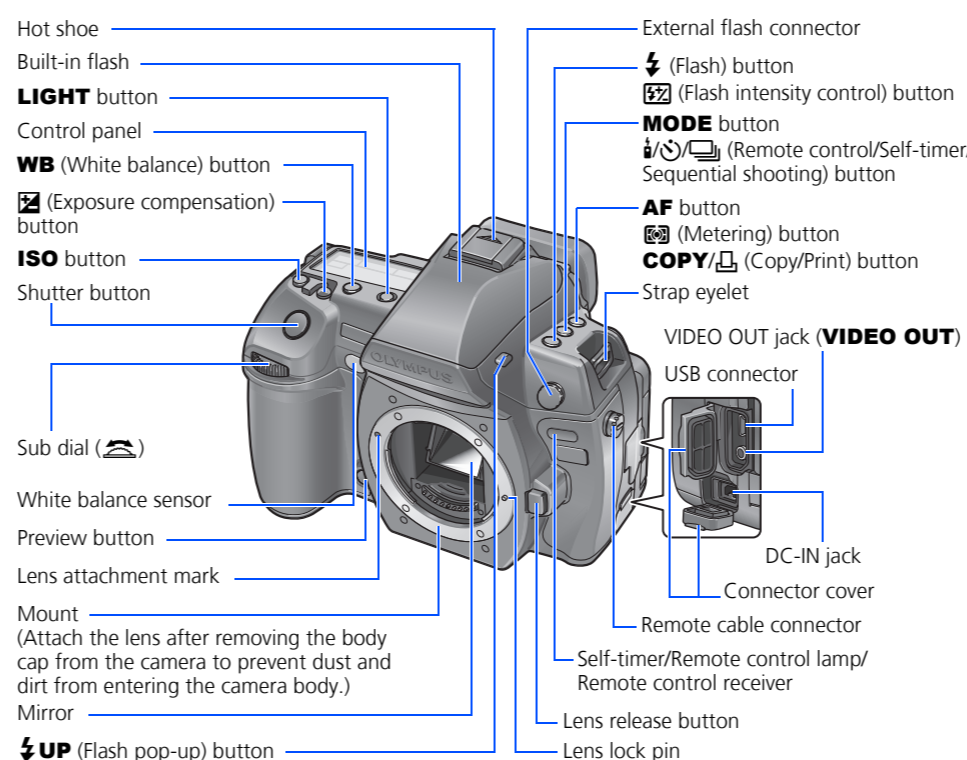
Quick Reference Guide



INDEX

1. Camera Diagram and Controls
2. Shooting Modes
3. How to Use the Buttons and Dials
4. How to Use the Autofocus
5. Record Modes
6. Flash Modes
7. Viewing Pictures on a TV
8. How to Erase All Pictures
9. E-mailing a Picture
10. Printing a Picture

1 CAMERA DIAGRAM AND CONTROLS



2 SHOOTING MODES

While holding down the **MODE** button, turn the main dial to switch the shooting mode. Release the **MODE** button to set.

P Program shooting

Allows you to shoot using an aperture and shutter speed that the camera sets.

A Aperture priority shooting

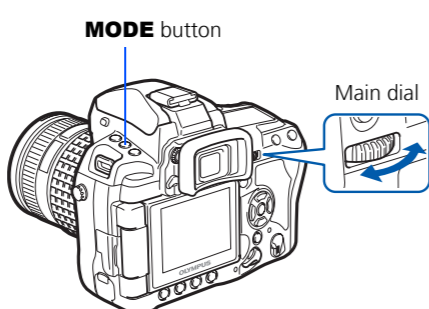
Allows you to set the aperture manually. The camera sets the shutter speed automatically.

S Shutter priority shooting

Allows you to set the shutter speed manually. The camera sets the aperture automatically.

M Manual shooting

Allows you to set the aperture and shutter speed manually.



3 HOW TO USE THE BUTTONS AND DIALS

This camera has a variety of functions to enable you to optimize settings for various shooting conditions. You can set the functions using the buttons and the dials while viewing the viewfinder or the control panel.

Remote control/Self-timer/Sequential shooting button: Sets the Remote control/Self-timer/Sequential shooting.

Exposure compensation button: Sets the exposure compensation value.

Flash button: Sets the flash mode.

IS (Image stabilizer) button: Turns on the image stabilizer.

AF target button: Selects the AF target.

ISO button: Sets the ISO sensitivity.

Metering button: Selects the metering mode.

WB (White balance) button: Selects the white balance appropriate to the light source from the following options: auto, preset white balance, customized white balance or one-touch white balance.

AF (Focus mode) button: Selects the focus mode.

Flash intensity control button: Adjusts the flash intensity.

a. While holding down a direct button, turn the main dial or sub dial.

b. Release the button to set the function.

Other buttons

Live view button:

Sets the live view mode. The subject is displayed on the LCD monitor. The display for shooting information can be turned off by pressing the **INFO** button.

Erase button: Erases unwanted images.

INFO (Information display) button:

Shooting: Displays the super control panel on the LCD monitor.
Playback: Displays shooting information or histogram of the recorded image. Each time this button is pressed, the information display is changed.

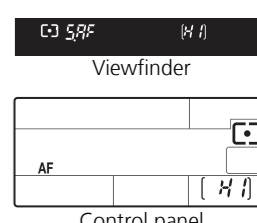
AEL/AFL button: Locks the exposure.

Playback button: Plays back images on the monitor.

MENU button: Displays the menu.

Protect button: Protects images from being accidentally erased.

LIGHT button: Turns the control panel light on and off.

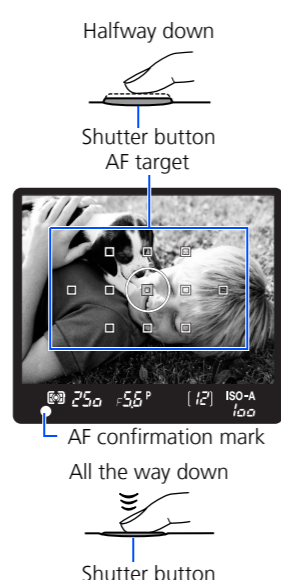


4 HOW TO USE THE AUTOFOCUS

a. While positioning the AF target over the subject, press and hold the shutter button halfway.

b. The AF confirmation mark indicating that the focus and exposure are locked remains lit as long as the shutter button is kept depressed.

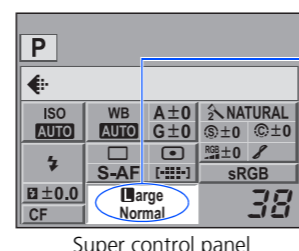
c. Press the shutter button completely to take the picture.



5 RECORD MODES

Your camera is equipped with multiple record modes, which determine the quality and image size of the pictures you take. Below is a general description of the commonly used modes. For a detailed description of all record modes, refer to the Instruction Manual.

| Application | Number of pixels | Pixel count | Compression rate | | | |
|-----------------------------------|------------------|-------------|-----------------------|--------------|----------------|----------------|
| | | | SF (Super Fine) 1/2.7 | F (Fine) 1/4 | N (Normal) 1/8 | B (Basic) 1/12 |
| Select for the print size | (Large) | 3648 × 2736 | SF | F | N | B |
| | (Middle) | 3200 × 2400 | SF | F | N | B |
| | | 2560 × 1920 | SF | F | N | B |
| For small-sized print and website | | 1600 × 1200 | SF | F | N | B |
| | (Small) | 1280 × 960 | SF | F | N | B |
| | | 640 × 480 | SF | F | N | B |



You can set the record mode from the super control panel displayed on the LCD monitor. Press the **INFO** button and use the arrow pad to move the cursor to the record mode. Then turn the main dial (or sub dial) to select the setting.

6 FLASH MODES

This camera features multiple flash modes. You can select the appropriate flash mode to suit the situation.

You can set the flash mode using the flash button. While holding down the flash button, turn the main dial to select the setting. Setting information is displayed in the viewfinder and on the control panel while you are setting a function.

AUTO



- Auto-flash - The camera decides if the flash is needed.
- Red-eye reduction flash - Reduces the incidence of red-eye by emitting pre-flashes to shrink pupil size before taking the picture.

SLOW



- Slow synchronization + Red-eye reduction flash - This mode is for SLOW when you want to use slow synchronization, yet also reduce the red-eye phenomenon.

SLOW



- Slow synchronization (1st curtain) - The flash fires right after the shutter fully opens.

SLOW/2ND CURTAIN



- Slow synchronization (2nd curtain) - 2nd curtain flash fires just before the shutter closes.
- Fill-in flash - The flash always fires. Suitable for taking subjects lit from behind by strong light.
- Flash off - The flash is turned off. Suitable for when flash photography is not permitted. In this mode, the flash can be used as an AF illuminator when it is raised.

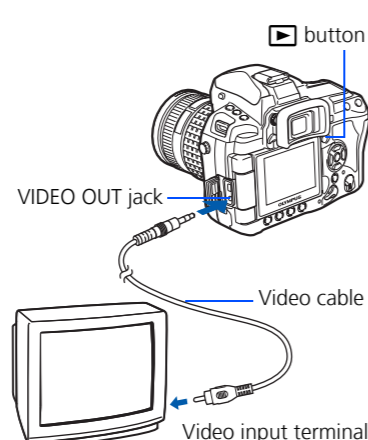
Manual flash: You can also set the amount of light (FULL, 1/4, 1/16, or 1/64) in the flash mode setting.

7 VIEWING PICTURES ON A TV

a. Turn the camera and TV off, and connect the video cable as illustrated.

b. Turn on the TV and set it to the video input mode. For details on switching to the video input mode, refer to the TV's instruction manual.

c. Turn the camera on and press the **PLAY** button.



Note: If the pictures are not displayed, consult your TV manual to set up the video source.

8 HOW TO ERASE ALL PICTURES

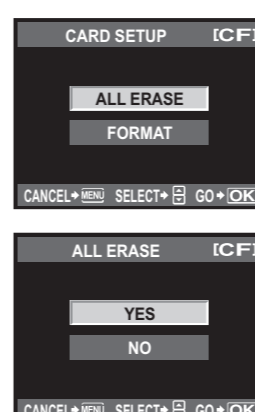
WARNING - PERFORMING THESE STEPS WILL DELETE ALL STORED PICTURES!

a. Press the **MENU** button. Use **INFO** to select **INFO**, then press **INFO**.

b. Use **INFO** to select **CARD SETUP**, then press **INFO**.

c. Use **INFO** to select **ALL ERASE**, then press the **INFO** button.

d. Use **INFO** to select **YES**, then press the **INFO** button.



9 E-MAILING A PICTURE

Using the OLYMPUS Master software (included), you can share your pictures with others by using the built-in e-mail feature.

After installing OLYMPUS Master, open the program and click "E-mail" in the toolbar. Select the image(s) to attach to the e-mail within the thumbnail area, and drag and drop them into the register area.

At this time, you can resize your pictures to make them more manageable for e-mail. This helps you stay within the e-mail capacity limitations set by your e-mail provider.

When finished, click the "Launch Mailer" button at the bottom of the window. Your default e-mail program will open, and the selected picture(s) will automatically be attached to a new message.

10 PRINTING A PICTURE

Using the OLYMPUS Master software (included), you can make prints of your pictures using your own photo printer.

After installing OLYMPUS Master, open the program, click "Print Menu" in the toolbar, and select "Photo Print". With "Photo Print", you can drag and drop the desired image and select a layout to print. "Index Print" allows you to print thumbnails with file information. For detailed instructions, please refer to the "Help" menu in the software.

Alternatively, you can print your pictures by connecting your PictBridge* compatible camera directly to a PictBridge* compatible printer. This permits fast, easy printing without using a computer.

*For detailed instructions on using PictBridge, please refer to your camera's Instruction Manual.

What you can do with OLYMPUS Master software

- The provided software CD includes OLYMPUS Master software for viewing and editing images. Once installed, you can take advantage of viewing and editing your images. For information on how to use OLYMPUS Master software, see Help after installation.

- Install OLYMPUS Master on your computer from the provided CD-ROM. OLYMPUS Master allows you to register as the camera's owner. Doing so will enable you to receive information on software or firmware upgrades from Olympus.

- OLYMPUS Studio Trial Edition is included in the OLYMPUS Master CD-ROM, which can be used for 30 days after installation. You can purchase the license number for the full version from the [Help] menu.



CONTACT INFORMATION

OLYMPUS IMAGING AMERICA INC.

3500 Corporate Parkway, P.O. Box 610, Center Valley, PA 18034-0610, USA

Technical Support (USA):

24/7 online automated help: <http://www.olympusamerica.com/DSLRL>
Phone customer support: 1-800-260-1625 (toll free)

Our phone customer support is available from 8am - 10pm, (Monday to Friday) ET

E-mail: e-slrpro@olympus.com
Olympus software updates can be obtained at:
<http://www.olympusamerica.com/digital>

