

Quick Start Guide

FE-230/X-790 FE-240/X-795

Start Here

For more information, please refer to the Basic & Advanced Manuals or visit: www.olympusamerica.com/support

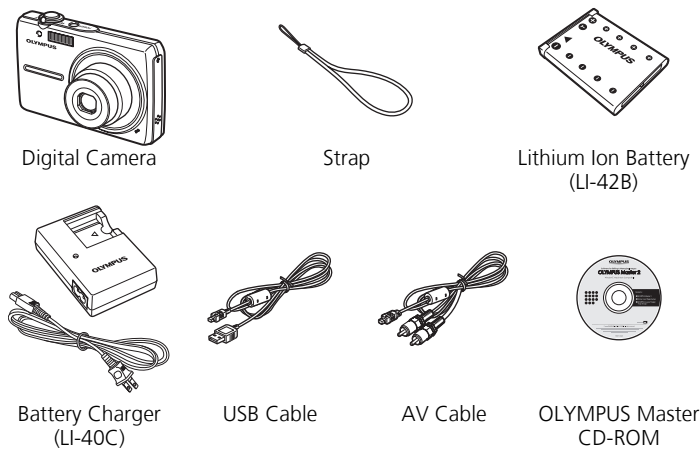
OLYMPUS IMAGING AMERICA INC.

© 2007 OLYMPUS IMAGING CORP.
Printed in Japan

1AG6P1P3339--

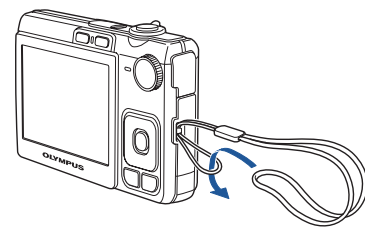
VK557201

1 Gather these items (box contents)



Items not shown: Advanced Manual (CD-ROM), Basic Manual, and the Warranty Card. Contents may vary depending on purchase location.

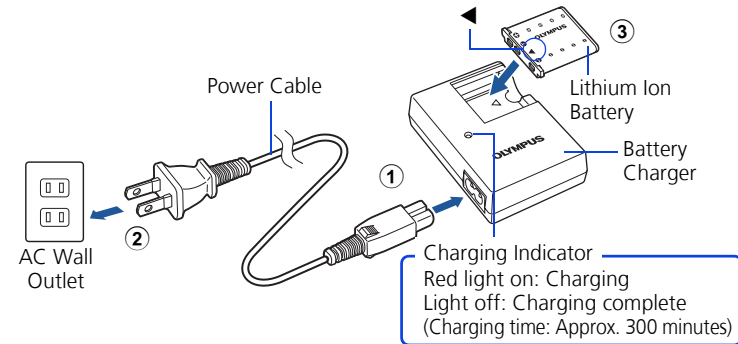
Attach the strap



● Pull the strap tight so that it does not come loose.

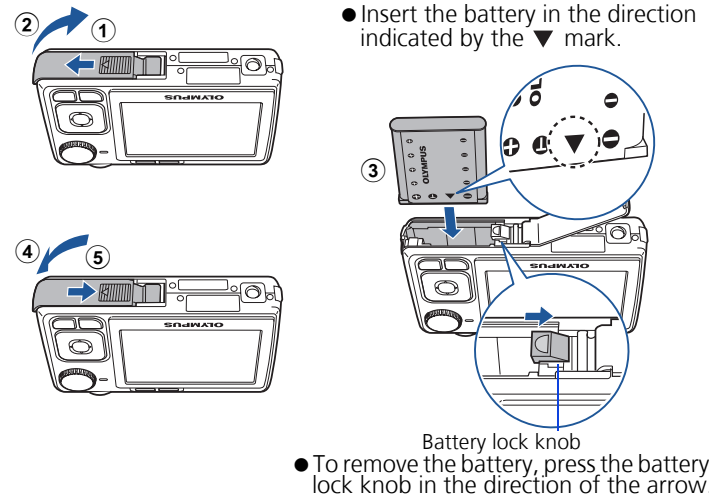
2 Prepare the battery

a. Charge the battery.



● Battery comes partially charged.

b. Insert the battery into the camera.



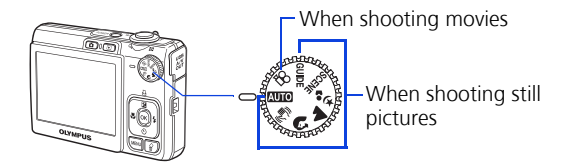
● Insert the battery in the direction indicated by the ▼ mark.

● To remove the battery, press the battery lock knob in the direction of the arrow.

3 Turn the camera on

This explains how to turn on the camera in shooting mode.

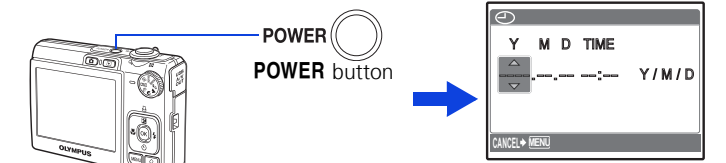
a. Set the mode dial to **AUTO**.



Still picture shooting modes

AUTO	For normal shooting.
	This function reduces the blur incurred by a moving subject, or camera shake when taking pictures. Suitable for taking pictures of people.
	Suitable for taking pictures of a landscape.
	Suitable for taking pictures of people at night.
SCENE	Select from 10 available scene modes (FE-240/X-795) or 13 available scene modes (FE-230/X-790), according to the shooting conditions.
GUIDE	Use the shooting guide displayed on the screen to shoot pictures according to the situation.

b. Press the **POWER** button.



● This screen is displayed if the date and time are not set.

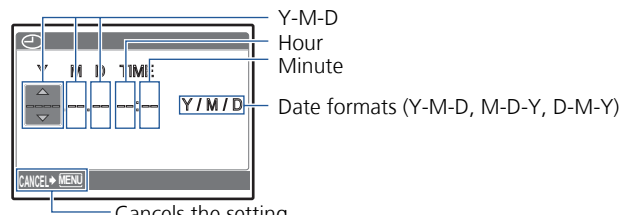
● To turn off the camera, press the **POWER** button once again.

Hint

The directions of the arrow pad is indicated with in the supplied instruction manual.

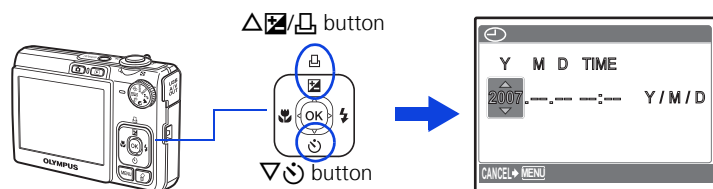
4 Set the date and time

About the date and time setting screen

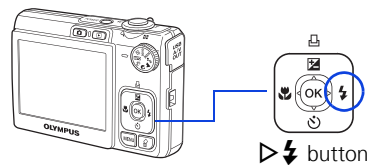


a. Press the and buttons to select [Y].

● The first two digits of the year are fixed.



b. Press the button.



c. Press the and buttons to select [M].

d. Press the button.

e. Press the and buttons to select [D].

f. Press the button.

g. Press the and buttons to select the hours and minutes.

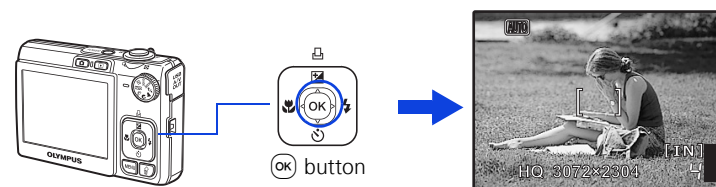
● The time is displayed in the 24-hour format.

h. Press the button.

i. Press the and buttons to select [Y/M/D].

j. After all settings have been set, press .

● For a more accurate setting, press when the time signal hits 00 seconds.

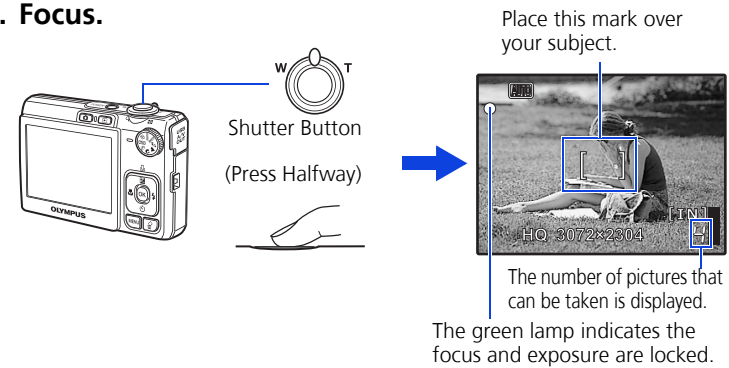


5 Take a picture

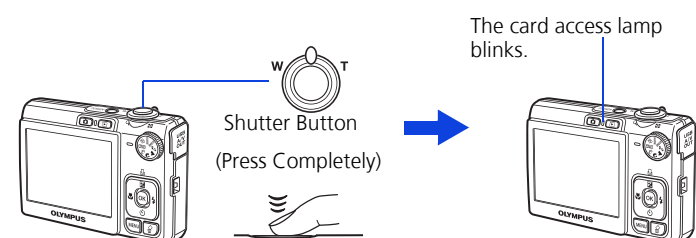
a. Hold the camera.



b. Focus.

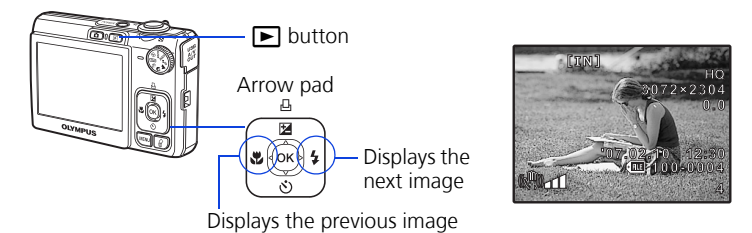


c. Shoot.



6 Review your pictures

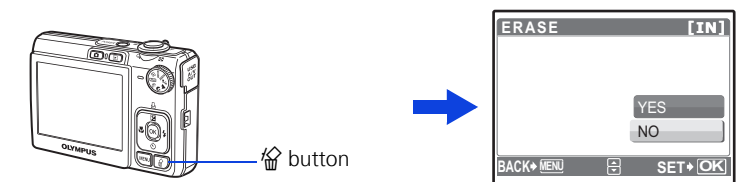
a. Press the button.



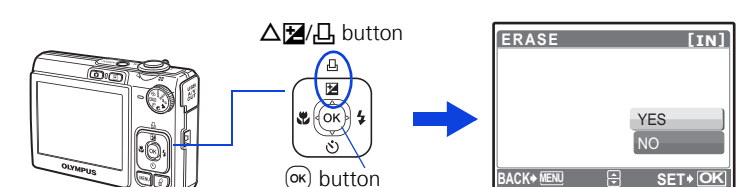
Erase pictures

a. Press the and buttons to display the picture you want to erase.

b. Press the button.



c. Press the button, select [YES], and press .



Guia de iniciação rápida

FE-230/X-790

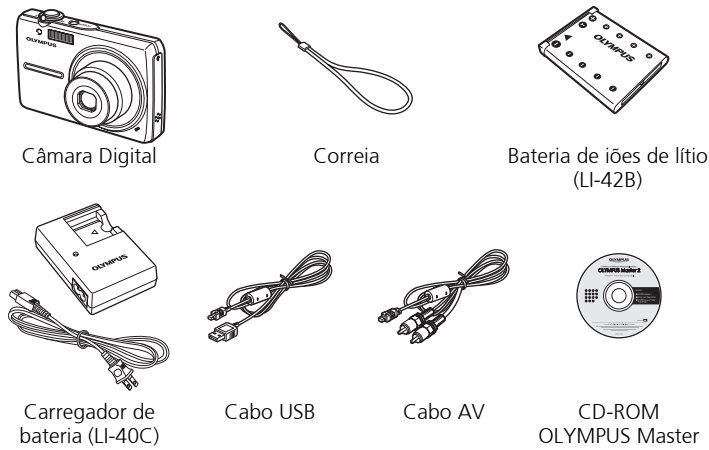
FE-240/X-795

Começar aqui

Para maiores informações, consulte os Manuais Básico e Avançado ou visite a página web www.olympusamerica.com/support

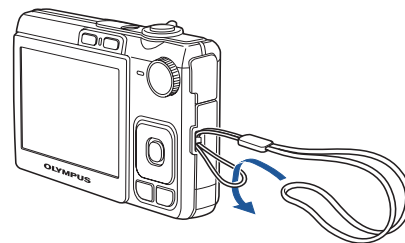
OLYMPUS IMAGING AMERICA INC.

1 Reunir estes itens (conteúdo da embalagem)



Itens não visualizados: Manual Avançado (CD-ROM), Manual Básico e o Certificado de Garantia. O conteúdo pode variar mediante o local de aquisição.

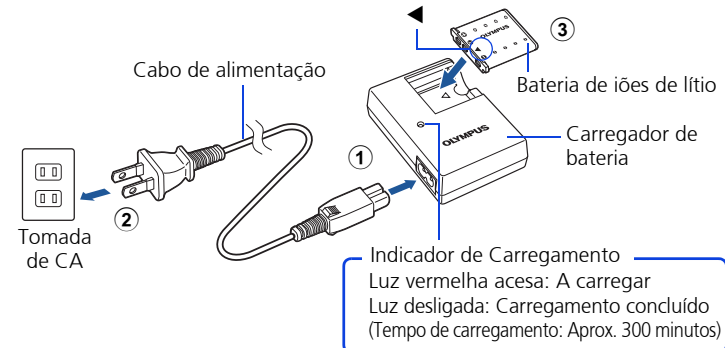
Colocar a correia



● Puxar bem a correia de modo a que não fique solta.

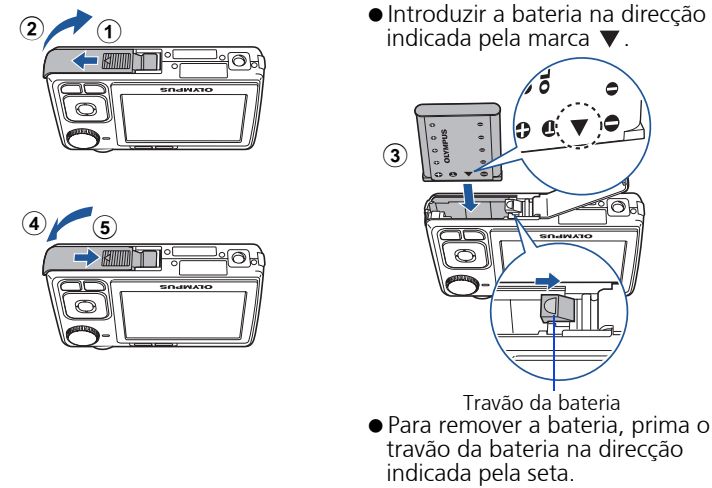
2 Preparar a bateria

a. Carregar a bateria.



Indicador de Carregamento
Luz vermelha acesa: A carregar
Luz desligada: Carregamento concluído
(Tempo de carregamento: Aprox. 300 minutos)

b. Introduzir a bateria na câmara.

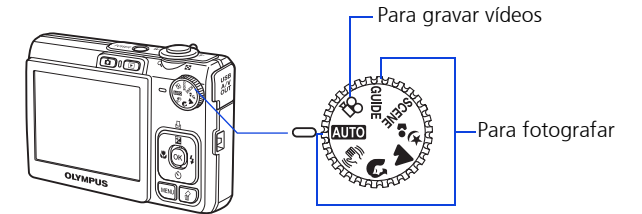


● Introduzir a bateria na direcção indicada pela marca ▼.
● Para remover a bateria, prima o travão da bateria na direcção indicada pela seta.

3 Ligar a câmara

Este modo explica como ligar a câmara no modo fotografia.

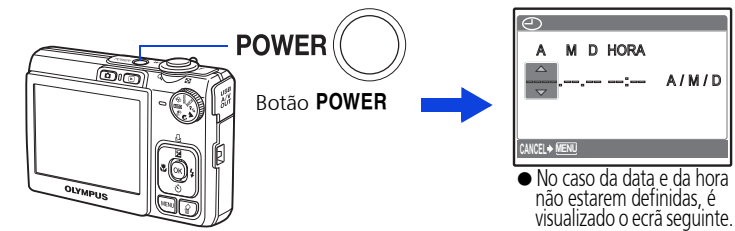
a. Colocar o selector de modo em **AUTO**.



Modos de fotografia

- AUTO** Para uma fotografia normal.
- (P)** Esta função reduz o efeito de arrastamento resultante de um tema fotográfico em movimento ou da própria oscilação da câmara ao fotografar.
- (P)** Ideal para fotografar pessoas.
- (L)** Ideal para fotografar uma paisagem.
- (N)** Ideal para fotografar pessoas à noite.
- SCENE** Seleccione de entre os 10 (FE-240/X-795) ou 13 (FE-230/X-790) modos de cena disponíveis, de acordo com as condições fotográficas.
- GUIDE** Usar o assistente de fotografia, visualizado no ecrã, para fotografar imagens mediante a situação.

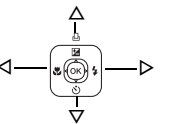
b. Premir o botão **POWER**.



● Para desligar a câmara, premir novamente o botão **POWER**.

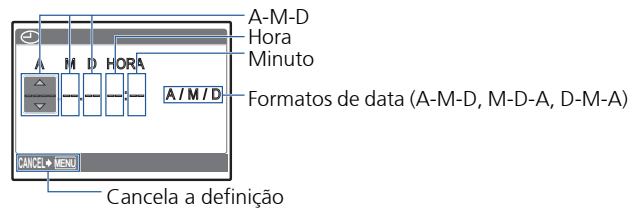
Sugestão

As direcções do selector em cruz são indicadas com Δ ∇ \leftarrow \rightarrow no manual de instruções fornecido.



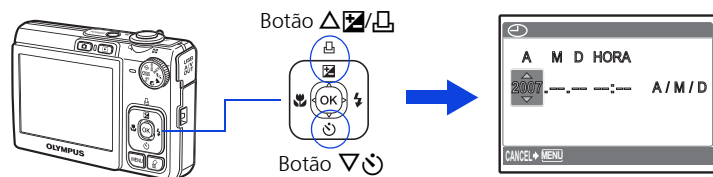
4 Definir a data e hora

Sobre o ecrã de definição da data e hora

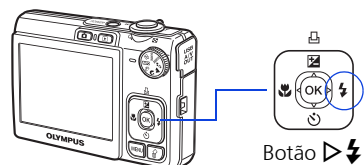


a. Premir os botões Δ ∇ \leftarrow \rightarrow de modo a seleccionar [A].

● Os primeiros dois dígitos do ano são fixos.



b. Premir o botão \rightarrow ∇ .



c. Premir os botões Δ ∇ \leftarrow \rightarrow para seleccionar [M].

d. Premir o botão \rightarrow ∇ .

e. Premir os botões Δ ∇ \leftarrow \rightarrow de modo a seleccionar [D].

f. Premir o botão \rightarrow ∇ .

g. Premir os botões Δ ∇ \leftarrow \rightarrow para seleccionar as horas e minutos.

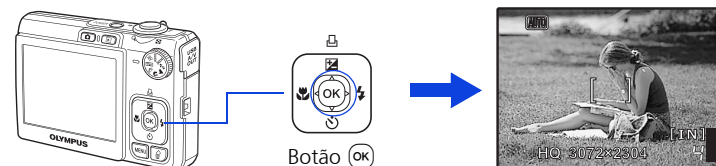
● A hora é visualizada no formato de 24 horas.

h. Premir o botão \rightarrow ∇ .

i. Premir os botões Δ ∇ \leftarrow \rightarrow para seleccionar [A/M/D].

j. Depois de configuradas todas as definições, premir OK .

● Para uma definição mais precisa, premir OK quando o sinal de hora chegar aos 00 segundos.

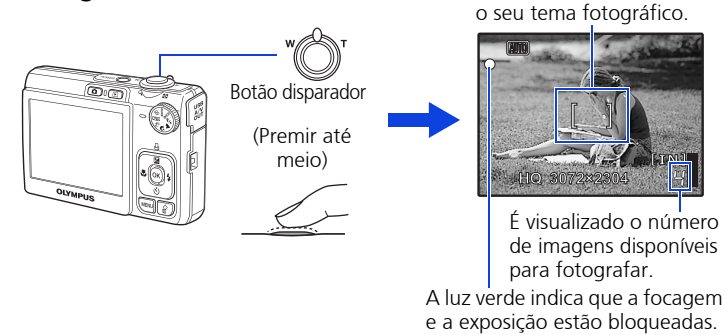


5 Fotografar

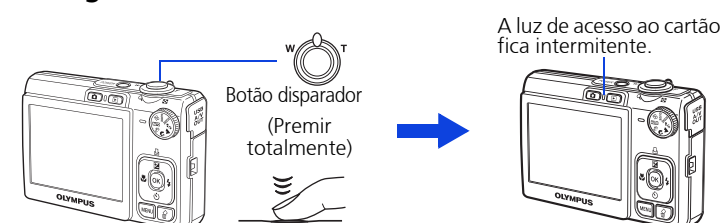
a. Segurar a câmara.



b. Focagem.

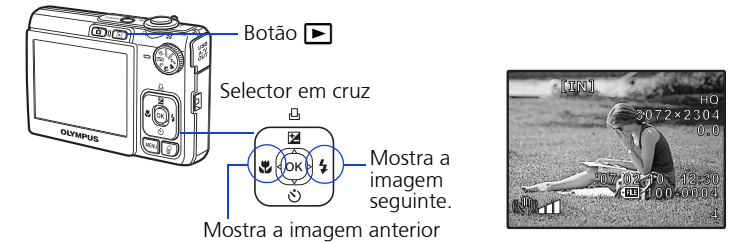


c. Fotografar.



6 Ver as suas imagens

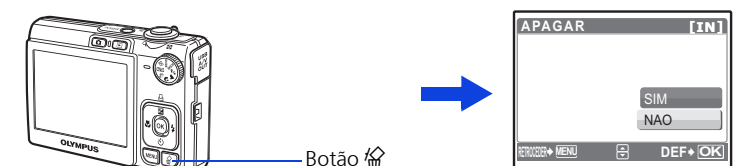
a. Premir o botão OK .



Apagar imagens

a. Premir os botões \leftarrow \rightarrow ∇ de modo a visualizar a imagem que pretende apagar.

b. Premir o botão OK .



c. Premir o botão Δ ∇ \leftarrow \rightarrow , para seleccionar [SIM], e premir OK .

