

# Quick Start Guide Stylus 710 Stylus 700

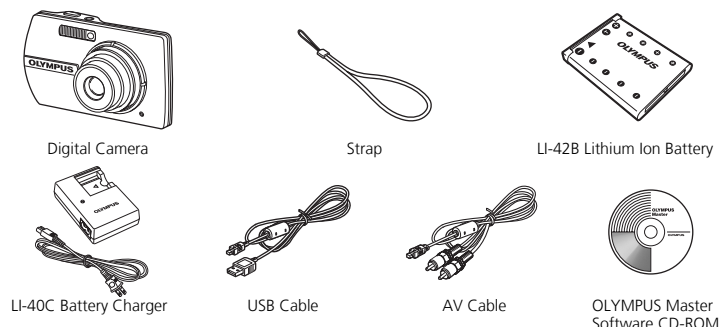
## Start Here

For more information, please refer to the Basic & Advanced Manuals or visit: [www.olympusamerica.com/support](http://www.olympusamerica.com/support)

OLYMPUS IMAGING AMERICA INC.

### BEFORE YOU BEGIN

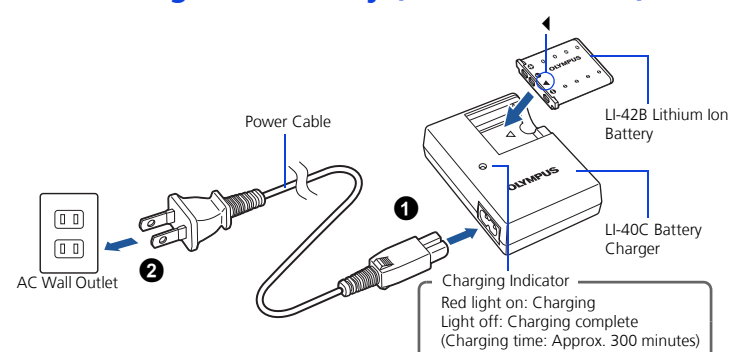
#### Gather these items (box contents)



Items not shown: Advanced Manual (CD-ROM), Basic Manual, warranty card. Contents may vary depending on purchase location.

The screen and camera illustrations shown in this manual were produced during the development stages and may differ from the actual product. Unless otherwise specified, the explanation about these illustrations is provided in Stylus710/μ710.

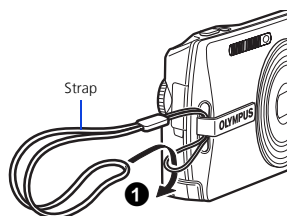
#### Charge the battery (recommended\*)



\*Battery comes partially charged.

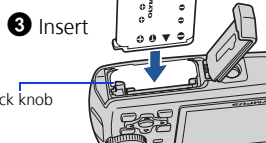
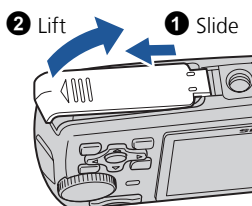
## 1 GET STARTED

### a. Attach the strap



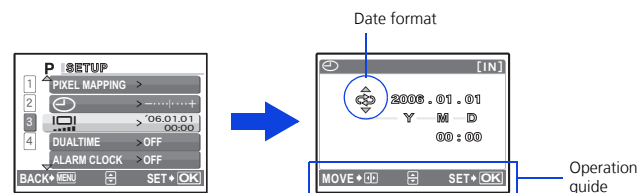
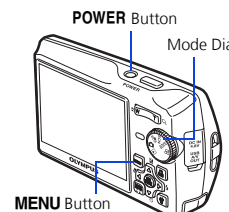
• Pull the strap tight so that it does not come loose.

### b. Insert the battery



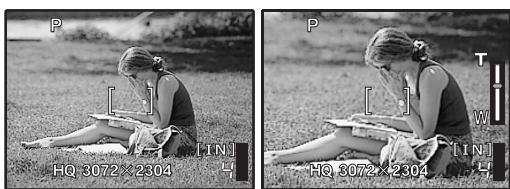
### c. Set the date and time

- 1 Press **POWER** button to turn the camera on.
- 2 Set the mode dial to
- 3 Press **MENU** button to display the top menu, and select [SETUP] > [IN].
- 4 Press  $\Delta$ / $\nabla$  to set an item. Press  $\leftarrow$ / $\rightarrow$  to select the next field.



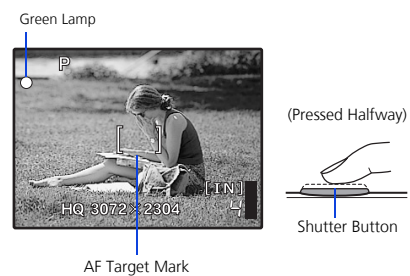
## 2 TAKE A PICTURE

### a. Zoom



### b. Focus

- 1 Using the monitor, place the AF target mark over your subject.



- 2 Press and hold the shutter button halfway to lock the focus.
  - The green lamp indicates the focus is locked.

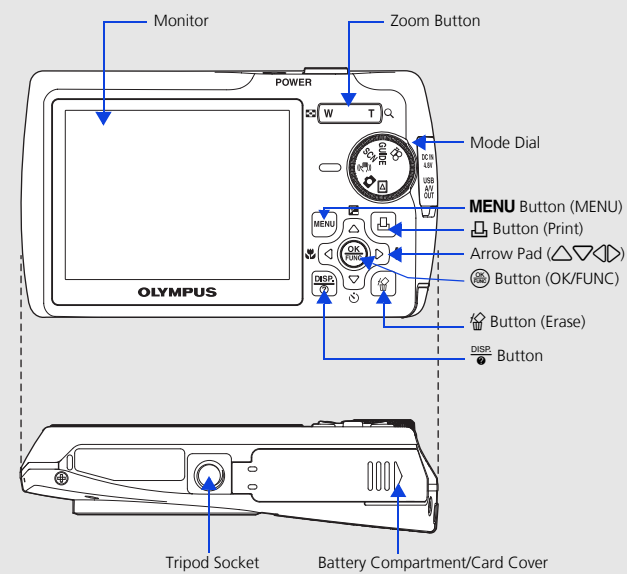
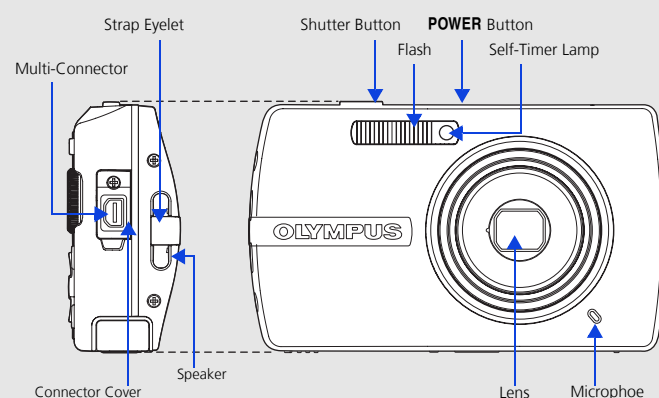
### c. Take the picture

- 1 Press the shutter button completely to take the picture.



- Pictures are recorded in the internal memory.
- Pictures can also be recorded to an optional xD-Picture Card (It is called just "card" in the attached instruction manual.)

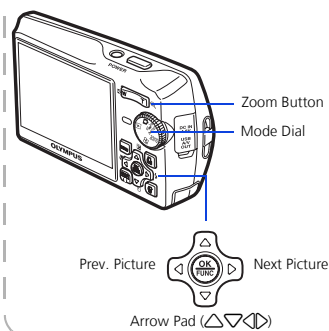
## CAMERA DIAGRAM



## 3 REVIEW OR ERASE A PICTURE

### a. Set the mode dial to

- The last picture taken will be displayed.



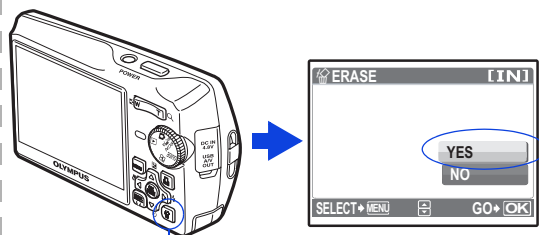
### b. Take a closer look

- Press T or W to zoom in or out.
- Press to return to the original size.
- Press  $\Delta$ / $\nabla$  or  $\leftarrow$ / $\rightarrow$  to scroll around.



Set the mode dial to to return to shooting mode.

### c. To erase a picture

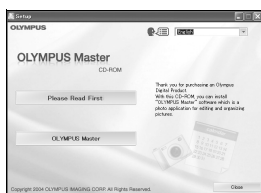


- 1 Display the picture you want to erase.
- 2 Press the button.
- 3 Select [YES], and press .
  - The picture is permanently erased.

## 4 TRANSFER IMAGES

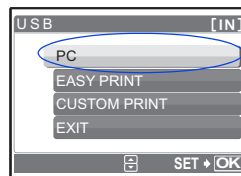
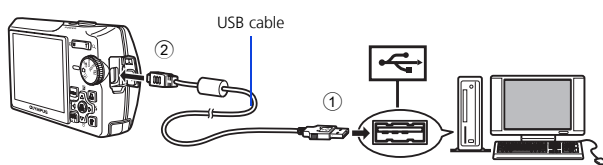
### a. Install the software

- 1 Insert the OLYMPUS Master CD-ROM.
  - 2 **Windows:** Click the "OLYMPUS Master" button.
  - 3 **Macintosh:** Double-click the "Installer" icon.
- Simply follow the on-screen instructions.
- Remember to register your camera when you install OLYMPUS Master or visit: [www.olympusamerica.com/prodreg](http://www.olympusamerica.com/prodreg)



### b. Connect the camera to the computer

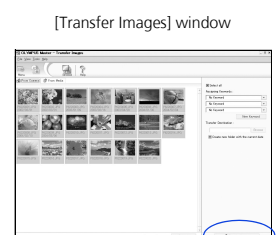
- 1 Connect the camera and computer using the USB cable (included).
  - The monitor will turn on automatically.
- 2 Select [PC] on the monitor, and press .



- Your PC will now recognize your camera as a removable storage drive.

### c. Transfer images to the computer

- 1 With the camera now connected, open OLYMPUS Master.
  - The [Transfer Images] window is displayed.
- 2 Select the images you want to transfer, and click the [Transfer Images] button.



If the [Transfer Images] window is not displayed automatically:

- a. Click the "Transfer Images" icon on the OLYMPUS Master main menu.
- b. Click the "From Camera" icon.

