

OLYMPUS

# Quick Start Guide Stylius 810

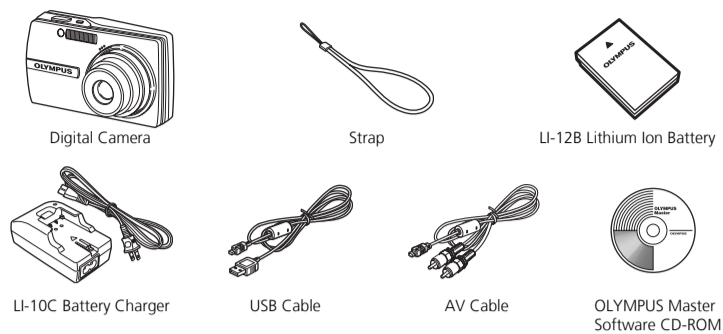
## Start Here

For more information, please refer to the Basic & Advanced Manuals or visit: [www.olympusamerica.com/support](http://www.olympusamerica.com/support)

OLYMPUS IMAGING AMERICA INC.

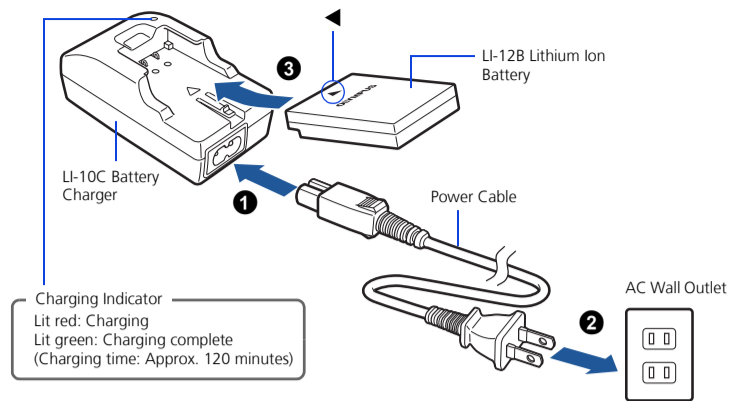
## BEFORE YOU BEGIN

### Gather these items (box contents)



Items not shown: Advanced Manual (CD-ROM), Basic Manual, warranty card. Contents may vary depending on purchase location.

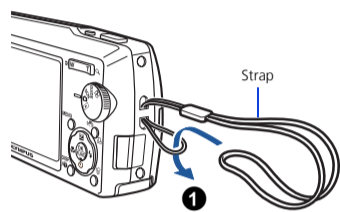
### Charge the battery (recommended\*)



\*Battery comes partially charged.

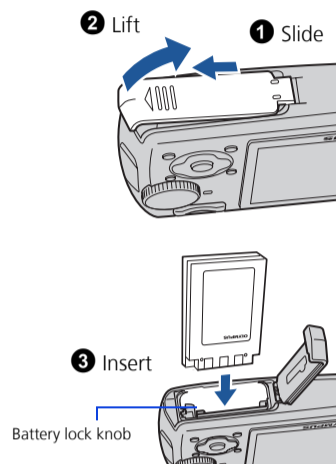
## 1 GET STARTED

### a. Attach the strap



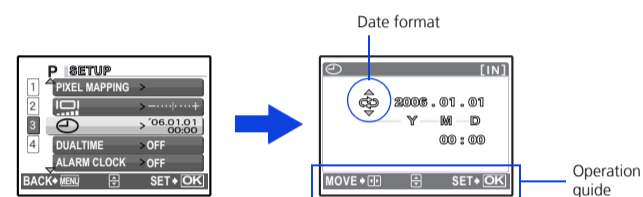
- Pull the strap tight so that it does not come loose.

### b. Insert the battery



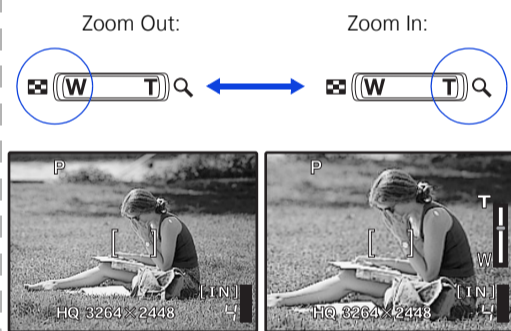
### c. Set the date and time

- 1 Press **POWER** button to turn the camera on.
- 2 Set the mode dial to **Ⓜ**.
- 3 Press **MENU** button to display the top menu, and select [SETUP] > [⌚].
- 4 Press **△**/**▽** to set an item. Press **◀**/**▶** to select the next field.



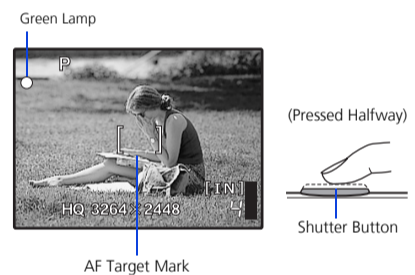
## 2 TAKE A PICTURE

### a. Zoom



### b. Focus

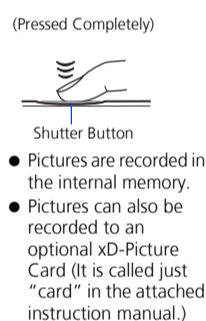
- 1 Using the monitor, place the AF target mark over your subject.



- 2 Press and hold the shutter button halfway to lock the focus.
  - The green lamp indicates the focus is locked.

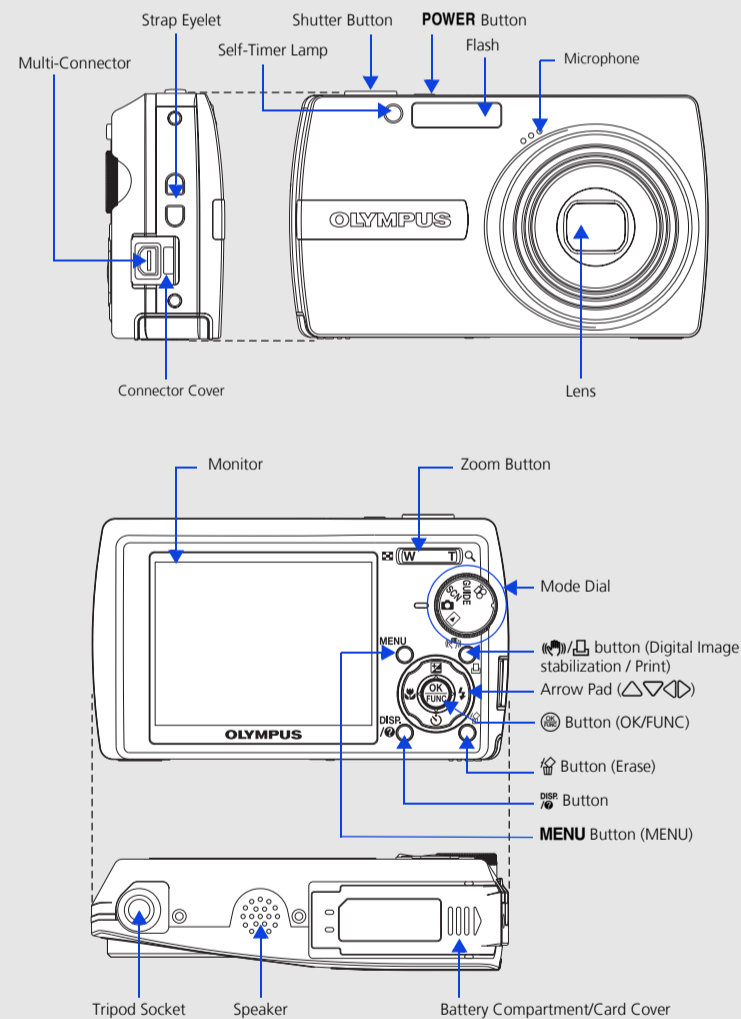
### c. Take the picture

- 1 Press the shutter button completely to take the picture.



- Pictures are recorded in the internal memory.
- Pictures can also be recorded to an optional xD-Picture Card (It is called just "card" in the attached instruction manual.)

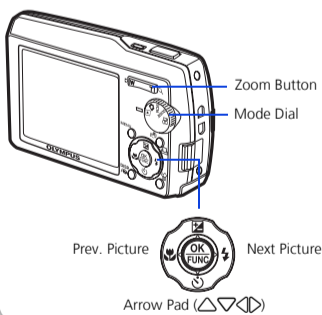
## CAMERA DIAGRAM



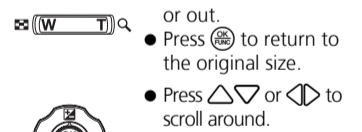
## 3 REVIEW OR ERASE A PICTURE

### a. Set the mode dial to **▶**

- The last picture taken will be displayed.



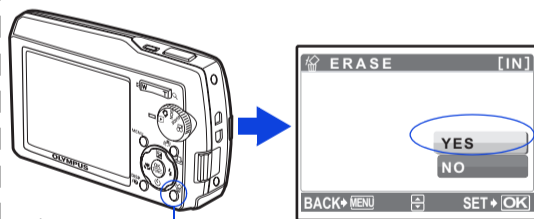
### b. Take a closer look



Set the mode dial to **Ⓜ** to return to shooting mode.

- Press T or W to zoom in or out.
- Press **Ⓜ** to return to the original size.
- Press **△**/**▽** or **◀**/**▶** to scroll around.

### c. To erase a picture

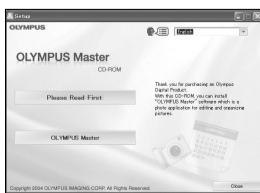


- 1 Display the picture you want to erase.
- 2 Press the **Ⓜ** button.
- 3 Select [YES], and press **Ⓜ**.
  - The picture is permanently erased.

## 4 TRANSFER IMAGES

### a. Install the software

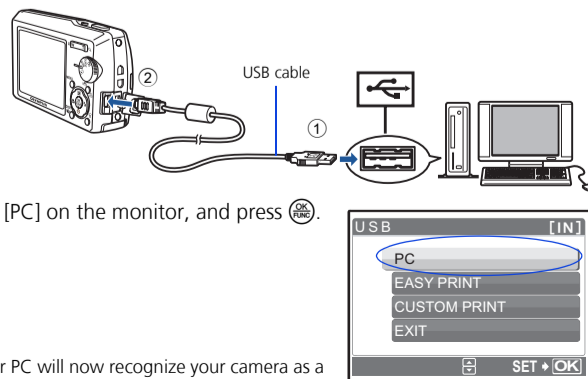
- 1 Insert the OLYMPUS Master CD-ROM.
- 2 **Windows:** Click the "OLYMPUS Master" button.
- 3 **Macintosh:** Double-click the "Installer" icon.
- 3 Simply follow the on-screen instructions.



- Remember to register your camera when you install OLYMPUS Master or visit: [www.olympusamerica.com/prodreg](http://www.olympusamerica.com/prodreg)

### b. Connect the camera to the computer

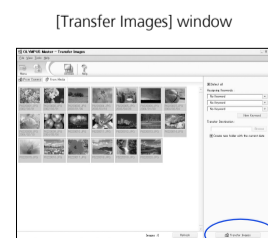
- 1 Connect the camera and computer using the USB cable (included).
  - The monitor will turn on automatically.
- 2 Select [PC] on the monitor, and press **Ⓜ**.



- Your PC will now recognize your camera as a removable storage drive.

### c. Transfer images to the computer

- 1 With the camera now connected, open OLYMPUS Master.
  - The [Transfer Images] window is displayed.
- 2 Select the images you want to transfer, and click the [Transfer Images] button.



If the [Transfer Images] window is not displayed automatically:

- a. Click the "Transfer Images" icon on the OLYMPUS Master main menu.
- b. Click the "From Camera" icon.

[Transfer Images] button