

OLYMPUS

OM-D

Your journey starts here

OM-D E-M10 Mark III



Wherever life takes you.



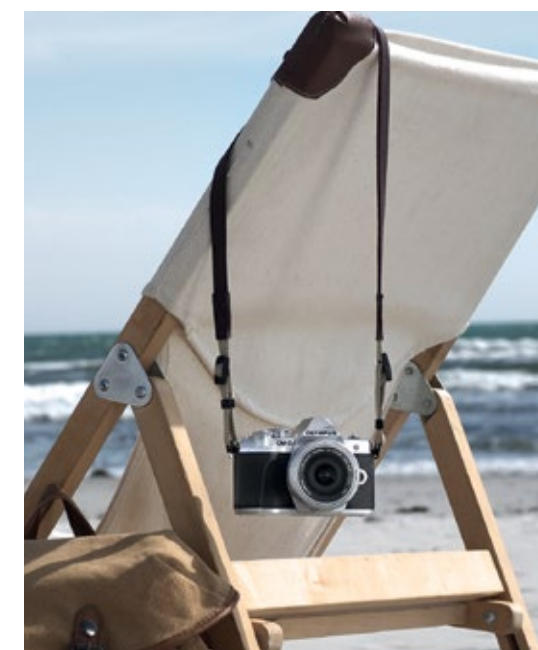
Look great.

Once you get your hands on the OM-D E-M10 Mark III's timeless design, you'll never want to put it down. The leather-grain grip and metal finish make this camera a sleek and stylish tool you'll enjoy using.



Travel light.

With the OM-D E-M10 Mark III, your equipment won't weigh you down. Just slip it over your shoulder and effortlessly take it along wherever you travel.





Incredibly
intuitive.



Make photography easier.

Enjoy the moment and let the OM-D E-M10 Mark III capture it in clear, crisp quality. The AUTO mode adjusts all the settings for the situation with precision, so you can shoot carefree.



Snap at a tap.

Use the Tough AF shutter to snap the exact, perfect moment. Choose the area of focus and then tap the screen to focus and shoot in one simple step.



Get the best angles.

Why settle for just one shot of the perfect scene? Easily capture it from any angle using the tilt touchscreen LCD. Creative control is yours.

Set the scene.

Ready to take your photography to the next level? Let the OM-D E-M10 Mark III do the work. In Scene Mode, you choose the scene, like Portrait or Night Shot – and the camera will deliver amazing pictures.



Go further.

There are no limits to how far you can go with the OM-D E-M10 Mark III. Advanced Photo (AP) Mode makes high-end photo techniques easy - like nighttime Live Composite for amazing light trails.

Let out your inner artist.

Compose your stills and videos with 15 built-in Art Filters to customize your photography's look.

Atmosphere.

Give your photos and videos a glossy nostalgic touch with Bleach Bypass.

Expression.

Make any scene more dynamic, with brighter and vivid colors, using Pop Art.



Surreal.

Get creative with Cross Process, which produces images like you've never seen before.



Vintage.

Revel in the warm sepia cast of early photography using Vintage.



Be ready for action.

Raise the bar.

Why settle for second best with other cameras when you can have the brilliant image and video quality your memories deserve? With the OM-D E-M10 Mark III, capture Ultra HD 4K video or High Speed 120 fps video for slow motion playback.



Shake-free.

Keep moving! Fool proof 5-Axis Image Stabilization keeps handheld photography steady. It makes sure your shots are pin-sharp while you are in motion, day or night.



Go for motion.

Leave the tripod at home. Film any moment freestyle in cinema-like quality thanks to the built-in 5-Axis Image Stabilization and capture even the smallest details in 4K quality.



Creativity has no limits.

There are virtually no limits to how creative you can be, how far you can go to capture special photos. The OM-D E-M10 Mark III is all you need.

Dynamic scenes.

HDR photography gives you more depth and dynamics with natural light – perfect for landscapes.



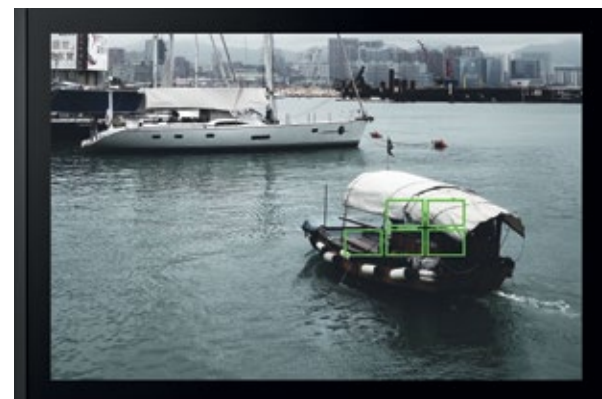
Immersive shots.

Use the Multiple Exposure feature to create fascinating multi-exposure shots.



Choose to want more.

The more the merrier – especially when it comes to autofocus precision for really sharp pictures. The OM-D E-M10 Mark III uses 121 AF points to do just that.



Faster is better.

Fleeting moments, split-second action – capture them carefree with the OM-D E-M10 Mark III. Its high-speed sequential shooting with 8.6 frames per second makes it possible.



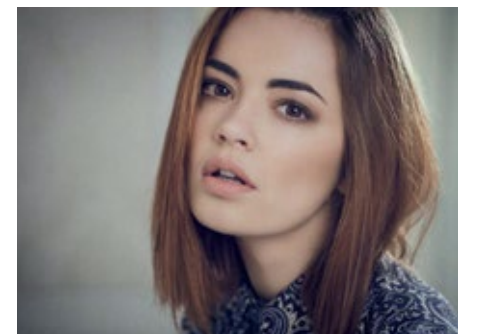
Clarity in action.

Because life isn't a show that you can direct, there's Continuous AF. It keeps the focus on your moving subject at all times.

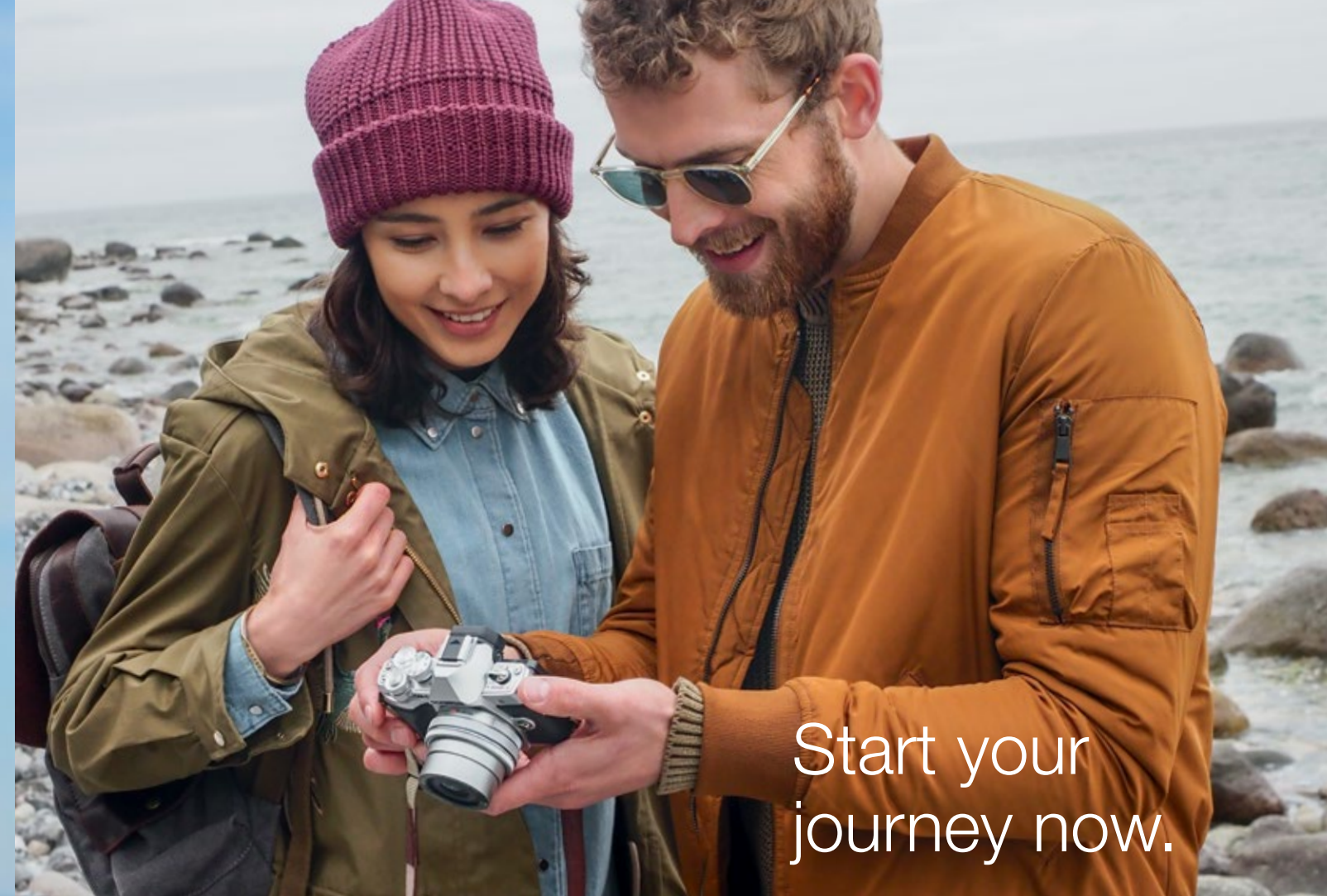


Perfect portraits.

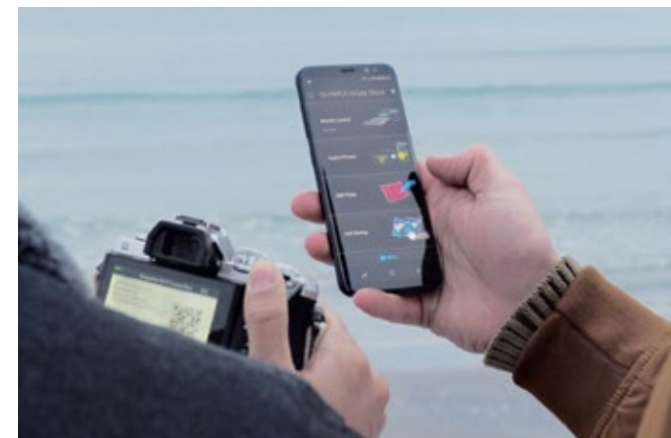
Make sure everyone looks their best when you post their pictures. Face Priority and Eyes Detection let you get better portraits.



Connect with the world.



Start your
journey now.



Go wireless.

The OM-D E-M10 Mark III's built-in Wi-Fi easily syncs with your smart device. Use the free OI.Share app on your synced device to remotely control your camera and wirelessly upload and share images and videos on the go.



Enhance as you like.

Use different filters and creative settings to make your shots as unique as you are – with the free OI.Palette app for editing and enhancing on your smart device.



Accessories and Lenses.

Experience an even better journey.
Customize your camera so that it's
just right for you.



LC-60.5GL Leather Lens Jacket
CS-51B Leather Body Jacket
CSS-S109LL II Leather Strap



CS-43 Quilted
Cushion Case



CSS-S119L
Leather Neck Strap



CS-44SF
Soft Camera Case

ZUIKO LENS SYSTEMS

Breathtaking landscapes, close-
up details of nature, beautiful
portraits – whichever lens you
choose, pristine image quality is a
given. See the entire lens lineup at
getolympus.com/mzuiiko.



M.ZUIKO
9-18mm f4.0-5.6



M.ZUIKO
14-150mm f4.0-5.6 II



M.ZUIKO
40-150mm f4.0-5.6 R



M.ZUIKO
17mm f1.8



M.ZUIKO
25mm f1.8



M.ZUIKO
30mm f3.5 Macro



M.ZUIKO
45mm f1.8

Camera Details.

Number of pixels / aspect ratio	16.1 MP Aspect ratio: 1.33 (4:3)	
Image stabilization	Built-in 5-axis sensor-shift image stabilization for video and still photos	
Stabilization performance	4.0 EV steps*	
Viewfinder	Electronic OLED viewfinder, Approx. 2.36M-dot	
Field of view / Viewfinder magnification	Approx. 100% / Approx. 1.23x	
Live View	Approx. 100% field of view, exposure compensation preview, WB adjustment preview, gradation preview, face detection preview (up to 8 faces)	
Autofocus	121-point contrast detection AF	
Shutter type	Mechanical and electronic shutter / 1/4000 - 60 sec., with 1/3 EV adjustment steps Live Bulb/Live Time: Max. 30 min. Live Composite: Max. 3 hours Electronic first curtain shutter (Anti-shock mode): 1/320 - 60 sec Electronic shutter (Silent mode): 1/16000 - 30 sec	
Art Filters	Pop Art Soft Focus Pale & Light Color Light Tone Grainy Film Pin Hole Diorama Cross Process	Gentle Sepia Dramatic Tone Key Line Water Color Vintage Partial Color Bleach Bypass
Video recording format	MOV (MPEG-4AVC/H.264)	
Mode / frame rate / compression method	3840 × 2160 (4K) / 30p, 25p, 24p / IPB (approx. 102 Mbps) 1920 × 1080 (FHD) / 30p, 25p, 24p / IPB (SF, F, N) 1920 × 1080 (FHD) / 60p, 50p / IPB (SF, F, N) 1280 × 720 (HD) / 30p, 25p, 24p / IPB (SF, F, N)	
High speed movie	1280 x 720 (HD) / 120fps, MOV	
Sequential shooting maximum speed	S-AF: Approx. 8.6 fps** (IS ON/OFF) C-AF: Approx. 4.8 fps** (IS ON/OFF) **When using the M.ZUIKO DIGITAL ED 14-42mm 1:3.5-5.6 EZ.	
Dimensions	W:121.5mm H:83.6mm D:49.5mm (based on CIPA standards)	
Weight	Approx. 410 g (with BLS-50 battery and Memory card, based on CIPA standards) Approx. 362 g (body only)	

*Based on CIPA measurement conditions. When using M.ZUIKO DIGITAL ED 14-42mm 1:3.5-5.3 EZ at focal length 42mm (35mm equivalent = 84mm).

OLYMPUS



U10000000690