



OM-1

—
QUICK START GUIDE



1. Overview	3
<hr/>	
Frontside, Backside	Pg. 3
Top View, Side View Right, Side View Left	Pg. 4
2. Super Control Panel	6
<hr/>	
3. Modes	8
<hr/>	
PASM	Pg. 8
B	Pg. 9
4. Custom Modes	10
<hr/>	
C1, C2	Pg. 10
C3, C4	Pg. 11
5. Autofocus	12
<hr/>	

Preface

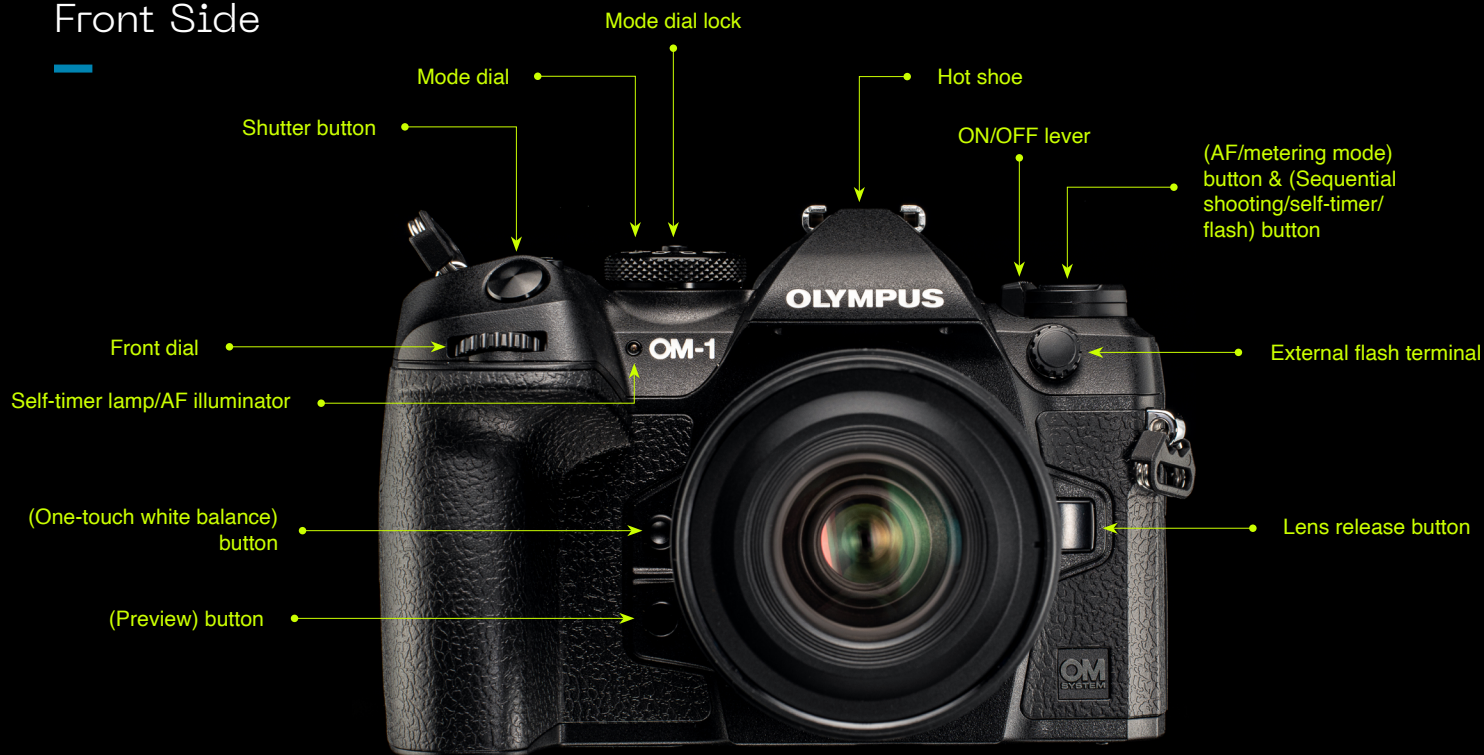
This Quick Guide provides an quick introductory overview of the OM-1. For detail information and instruction on using your OM SYSTEM equipment, please see the repective user maunuals, which can be found on the support pages of OM SYSTEM Website. To accompany your adventures in photography OM SYSTEM has created several access points with a great mix of technical, community and educational content - all for free.

<https://shop.olympus.eu/> - Olympus (Europe)

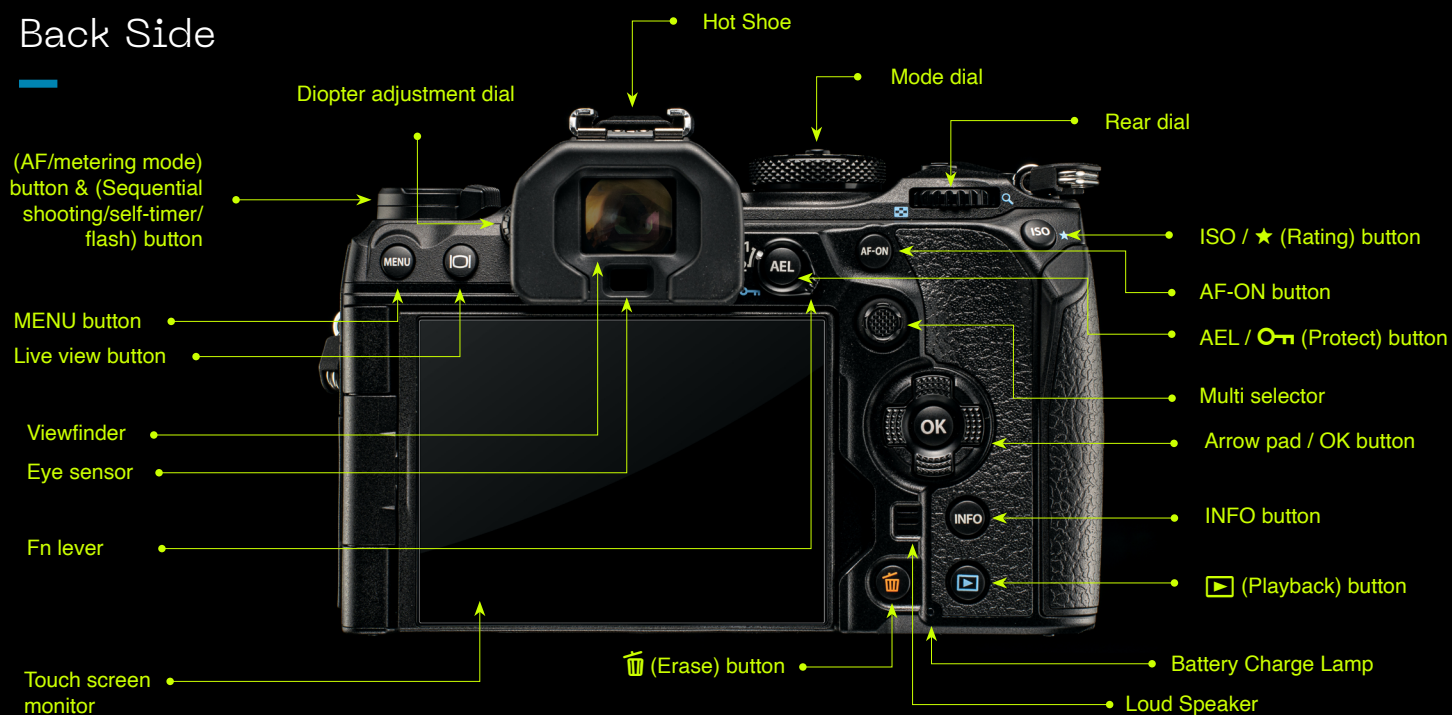
<https://learnandsupport.getolympus.com/> - Learning Center (US)

<https://www.youtube.com/c/OMSystemGlobal>

Front Side



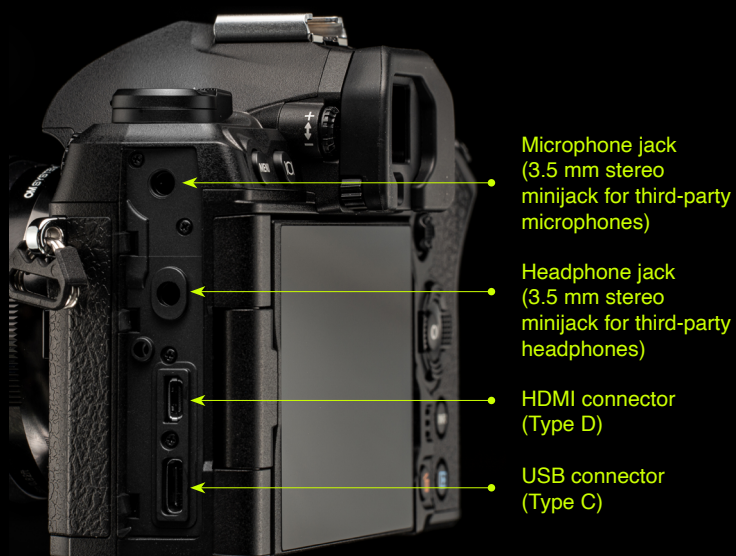
Back Side



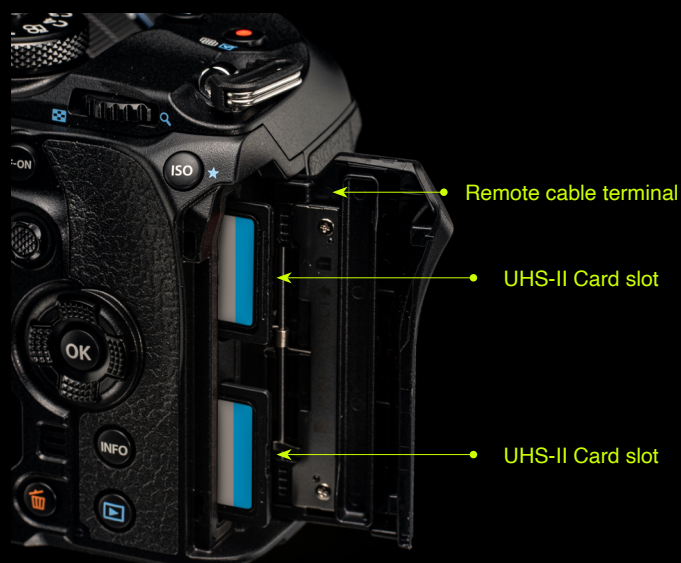
Top Side



Left Side



Right Side





Portability

Portability is essential for all adventurers, who take all efforts to get the image. The OM-1 offers, together with the M.Zuiko lenses, an unrivaled portability, as it produces the highest image quality in a small and light-weight body. Compared to 35mm camera the equivalent lenses are much smaller and lighter. This gives you the possibility of agile handheld shooting even with long tele lenses and allows photographers to take advantage of the mobility of the system

Carrying lighter gear gives you more energy. More shooting flexibility. More ways to express yourself. You're free to shoot longer so you can nail the best shot and enjoy your photography more.

600mm equiv.

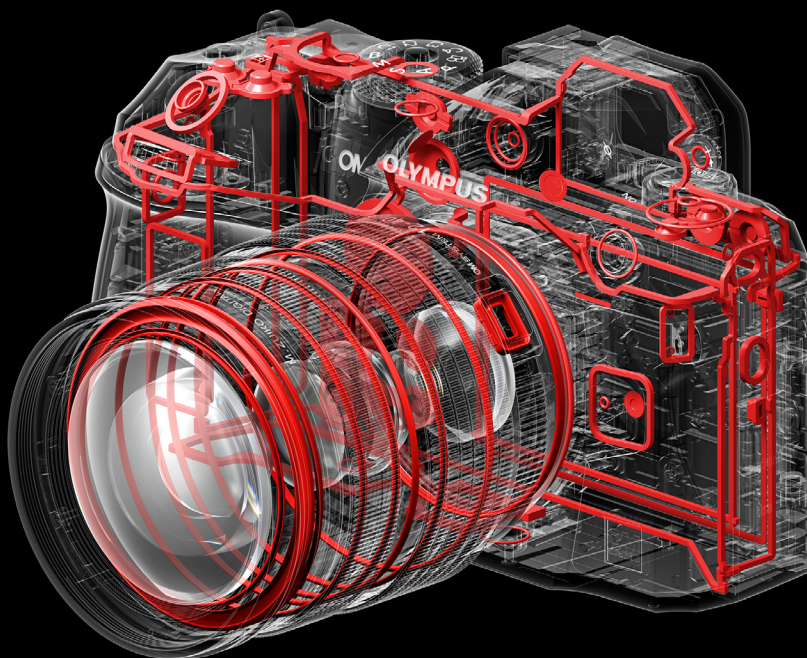


OM SYSTEM OM-1 + M.Zuiko Digital ED 300mm F4.0 IS PRO

Weathersealed

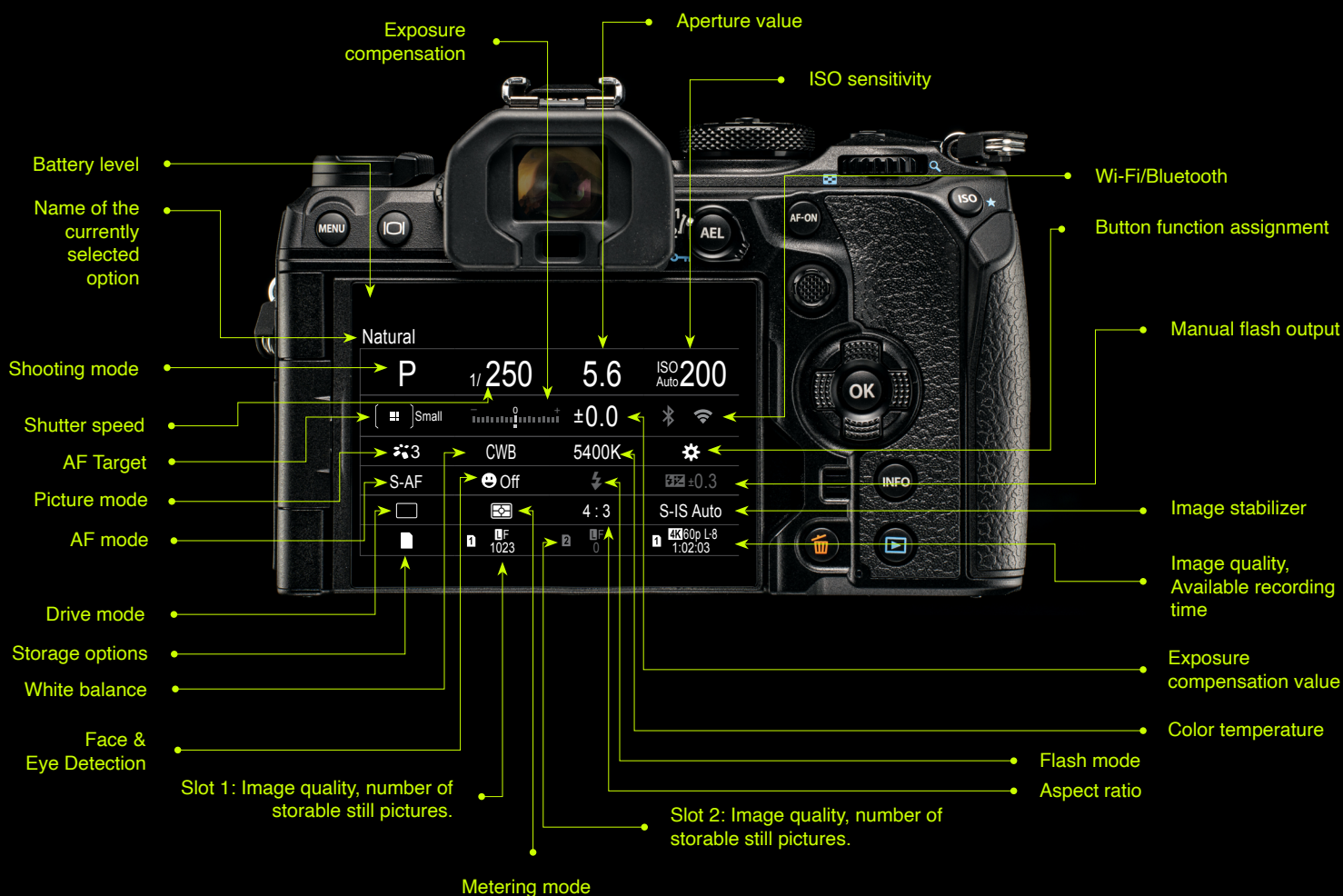
IP53

When you call nature your home and you are shooting in the wild it is essential that your camera can withstand all natural forces. The OM-1 is sealed with cast rings to ensure an IP53 dustproof and splashproof performance to give you the confidence that you can take your photos in the roughest conditions.

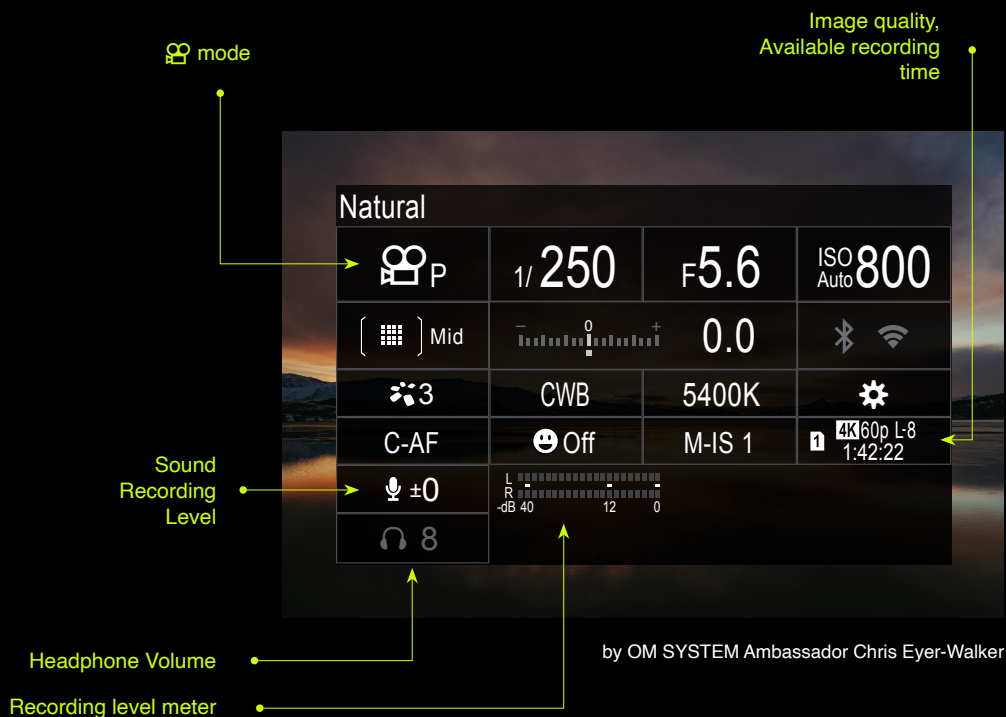


Super Control Panel Photo

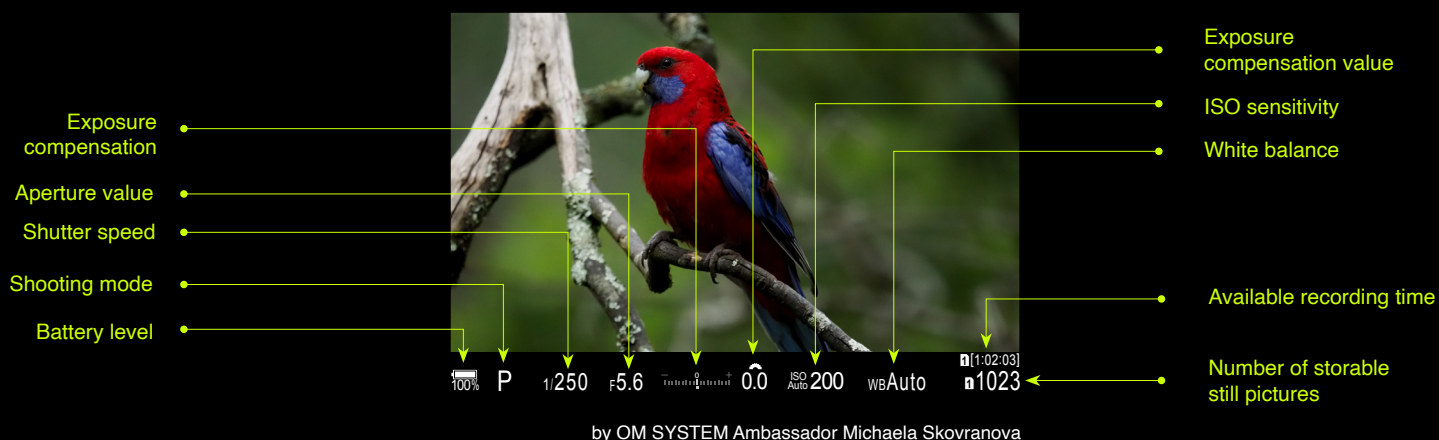
All shooting options can be accessed via the Super Control Panel (SCP). It enables a quick and comfortable way to get an overview of all settings and an easy way to adjust them. You activate the SCP as an overlay by pressing the OK button. If you shoot with the viewfinder, you can display the SCP by pressing the Live View Button. That allows you to take control over all your camera settings. The touchscreen makes the operation easy, quick, and comfortable.



Super Control Panel Video



Viewfinder Interface Navigation



The mode dial is the main control of your camera and defines in which shooting mode you are working. Here you can decide how your camera should work and support your shooting style. Decide whether you would like to work in fully automatic mode or completely manual.



PASM

P Mode

Use the P mode when you would like to let the camera decide on aperture and exposure time. However, you have always the option to overrule the settings.



by OM SYSTEM Ambassador Chris Eyer-Walker

S Mode

Use S mode when you would like to control the shutter speed in case you are shooting fast moving object. You don't have to worry about the aperture as the camera is choosing the one fitting to your shutter speed.



by OM SYSTEM Ambassador Ben Knoot

M Mode

For total control choose the M Mode. In this mode you select shutter speed and aperture as you want. The OM-1 shows in the viewfinder and / or monitor how the exposure of the final image will look like, that you are able to control the result before you take the image.



by OM SYSTEM Ambassador Hannu Huhtamo

B Mode

The B Mode gives a quick and easy access to the “Live Modes”: The camera shows you how the images develops and you can stop exposure as soon as it is well exposed.

“**Live Composite**” only adds composites of the sections with changes in brightness.

“**Live Bulb**” keeps the shutter open while the shutter release button is pressed.

“**Live Time**” opens the shutter on the first push and closes it on the second push of the shutter release button.



Custom Modes

Mode C1-C4 are memory slots which give you quick and easy access to your individual settings. They can be customized to your needs.

C1 // Birds in Flight

Taking images from birds in flight is quite challenging. This mode allows you to revisit the necessary settings on the spot, that you never miss a shot in future.

Shooting mode	S
Image Quality Mode	LSF + RAW
AF Mode	C-AF + TR
AF Target	ALL
AF Area Pointer	On2
Drive Mode	SH2 with 25 fps
Frame Rate EVF	High
Grid Settings	Three-way split composition
Grid color	White

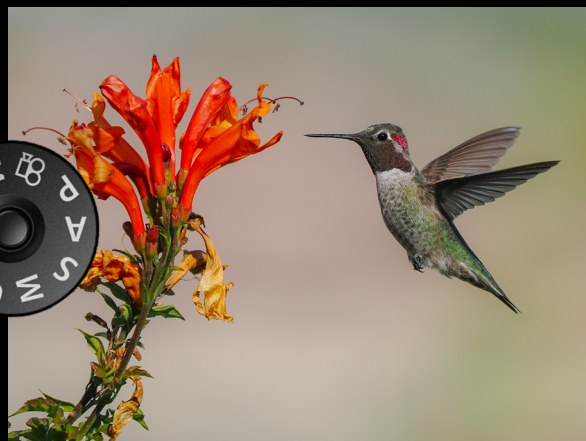


by OM SYSTEM Ambassador Ben Knoot

C2 // Pro Capture

Pro Capture starts shooting the moment you press the shutter release button down halfway, with a buffer that can be set to capture up to 70 frames in full resolution. This way you get the exact moment you want to capture without any lag.

Shooting mode	P
Image Quality Mode	LSF + RAW
AF Mode	S-AF
AF Target	Cross
AF Area Pointer	On1
Drive Mode	ProCapSH1 35 pre frames / 120 fps
Frame Rate EVF	High
Grid Settings	Flexible
Grid Color	White



by OM SYSTEM Ambassador Ben Knoot

C3 // Macro

Macro photography does have its own challenges. The OM-1 is perfectly prepared to support you as much as possible with special functionalities tailor made for macro photography

Shooting Mode	M
Image Quality	LSF+RAW
AF Mode	S-AF + MF
AF Target	Single
AF Area Pointer	On1
Drive Mode	Single
Grid Settings	Three-way split composition
Grid color	White



C4 // Landscape

Even though landscape photography is more relaxing, it is helpful to have all settings saved in one place. This helps you to concentrate on composing the image rather than thinking about the settings.

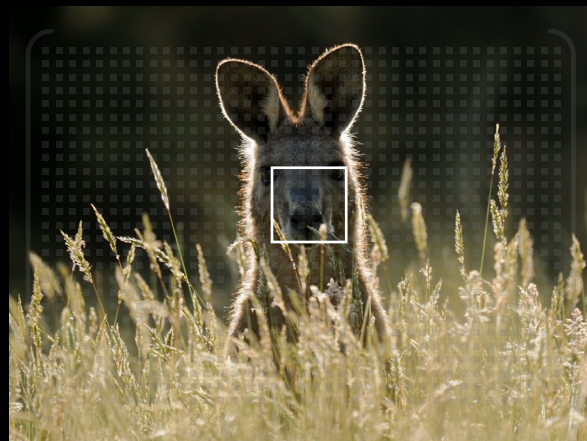
Shooting Mode	A
Image Quality Mode	RAW
White Balance	Sunny
AF Mode	S-AF
AF Target	Single
AF Area Pointer	On1
Drive Mode	Single
Grid Settings	Flexible
Grid Color	White



by OM SYSTEM Ambassador Chris Eyer-Walker

1053 point all Cross Quad Pixel AF

The more autofocus tracking points, the better. That's why the OM-1 has 1,053 point all Cross Quad Pixel AF for high-precision focusing. Every point is cross-type, enabling detection of vertical and horizontal lines for unmatched accuracy. It covers 100% of the image area and gives you more freedom to decide where to focus. It's advanced autofocus technology that ensures you'll capture it all, anytime, anywhere.



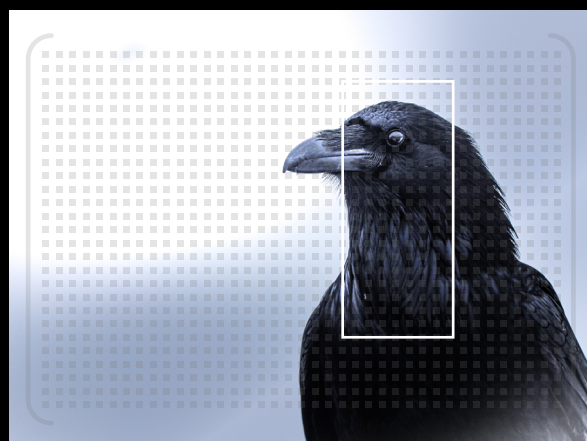
by OM Ambassador Michaela Skovranova

Full Customizable AF

AF customization makes it possible to individually set the AF target and AF area position for vertical and horizontal shooting. AF areas can be defined and placed anywhere to deal with subject movement.

Shift your AF areas quickly and easily with the multi selector while looking through the viewfinder even during sequential shooting or video recording.

AF menu > 5. AF Target Settings & Operations > AF Target Mode Settings

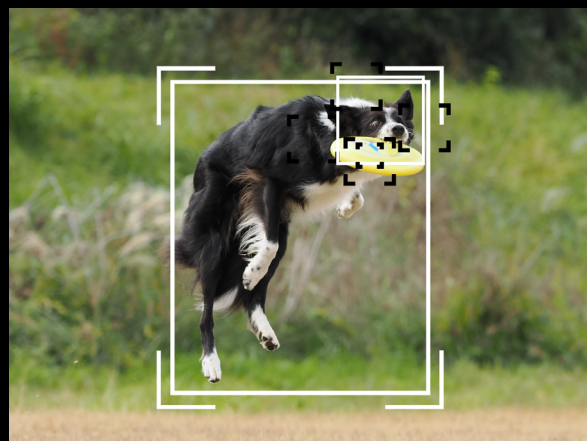


by OM Ambassador Brooke Bartleson

AI Detection AF

The improved algorithm is developed by using deep learning technology – a kind of artificial intelligence. It detects specific subjects and focuses on and tracks the optimal points.

The TruePic X Image Processors make real-time processing possible during sequential shooting. The camera can quickly track subjects that move unpredictably. You can either use C-AF+TR, C-AF or S-AF mode.



AF menu > 2. AF > Subject Detection



M.Zuiko Lens Lineup

Designed for professional photographers and enthusiasts alike, M.Zuiko lenses were born from a commitment to image quality and precision. Compact, lightweight construction ensures superior results while helping you enjoy your photography more.



More information about our lenses and accessories can be found on our website:

<https://shop.olympus.eu/> - Olympus (Europe)

<https://www.getolympus.com/us/en/mzuiko> - Olympus Lenses (US)

03/2022, Online Version 1.0

Specifications, availability and appearances are subject to change without notice or obligation on the part of the manufacturer. Some of the images featured only serve for illustrative purposes. The colours of products printed/shown herein may differ from those of the actual products. Micro Four Thirds, Four Thirds, and the Micro Four Thirds and Four Thirds logos are trademarks or registered trademarks of the OM Digital Solutions Corporation in Japan, the United States, the countries of the European Union, and other countries. All other company and product names are registered trademarks and/or trademarks of their respective owners. The pictures in the LCD monitors are simulated.

The data herein is as of March 2022.

